



## MESSAGE FROM THE HEADTEACHER

Dear Parents and Carers,

We've had two exciting visits this week at Rotherfield. On Tuesday, we hosted donors from Chefs in Schools, who visited to see our exceptional lunch provision in action. Our meals truly set us apart: ingredients are sourced locally, meals are nutritionally complete and everything is cooked from scratch - even the bread is baked fresh each morning. The donors also met our Pupil Food Council, who spoke confidently about their favourite lunches and their work to reduce food waste. They made us proud!

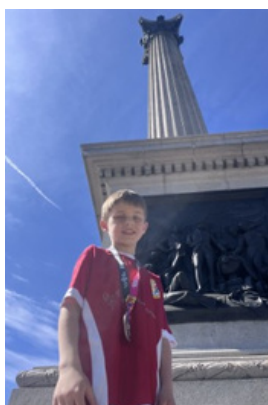
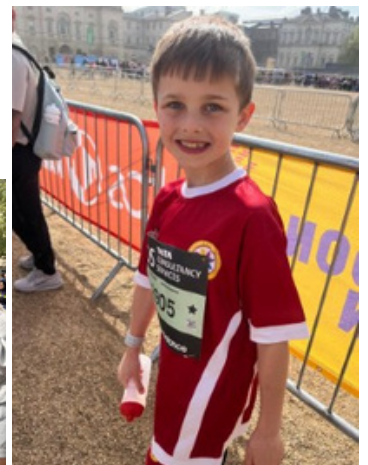
Today, Emily hosted her first Maths Mastery group, welcoming teachers from across the borough and a representative from the Maths Hub. Visitors observed her teaching before she led a training session on Maths Mastery. We are very fortunate to have her expertise within our team and we are seeing the impact of her work on pupil attainment and progress.

We're enjoyed the glorious sunshine this week. As the weather improves, we would like to remind families to: ensure jumpers and cardigans and clearly labelled, send child in with a named water bottle (they are encourage to drink from water fountains throughout the day too) and follow the school uniform policy, especially around footwear. Slip-on shoes, like crocs, pose a health and safety risk, so please ensure children are wearing appropriate school shoes.

Have a lovely Bank Holiday all and we will see you Tuesday!

## THIS WEEKS TOP NEWS - Mini Marathon

On Saturday, our students took on a fantastic 2.6km Mini Marathon and did an amazing job! With over 15,000 runners taking part, it was a truly exciting event - and we even featured on TV and BBC iPlayer! There was lots of energy, smiles, and cheering as everyone gave it their best effort. We were so proud to see the children encouraging each other and crossing the finish line with huge grins on their faces. What a brilliant achievement - well done to all our runners!



# SCHOOL ATTENDANCE



# STARS OF THE WEEK

Whole school: **93.5%**  
National: **95%**

Olive	99%
Silver birch	98%
Palm	97%
Cedar	96%
Elm	96%
Pine	94%
Oak	94%
Apple	94%
Willow	93%
Maple	92%
Mulberry	90%
Beech	88%
Rowan	87%
Ash	86%

Well done to all our wonderful children on their hard work this week. The following deserve a special mention for receiving **Star of the week!**

**Year 6: Samuel, Penny and Valentina**

**Year 5: Yusuf, Scarlett and Kaiden**

**Year 4: Ziba and Corey**

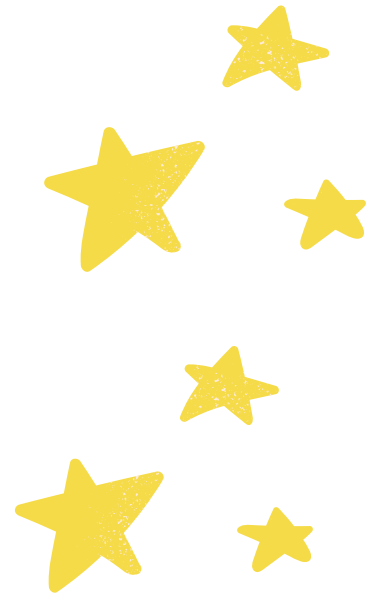
**Year 3: Willow and Zara**

**Year 2: Frankie and Hannah**

**Year 1: Harley**

**Reception: Xaelon**

**Nursery: Lucas**



## ATTENDANCE CHAMPIONS

**KS1: Shanyla** (Pine)



**KS2: Mikey** (Willow)

## POPCORN PARTY

(as chosen by the pupil voice)

Well done to **Olive** class for having the highest attendance this week!



## RESPECT CHAMPIONS

**KS1: Rico** (Palm)



**KS2: Berkin**  
(Cedar)



### Top Rockstar for this week:

Annabelle Hill most minutes played  
Willow class accuracy



### Top Numbot for this week:

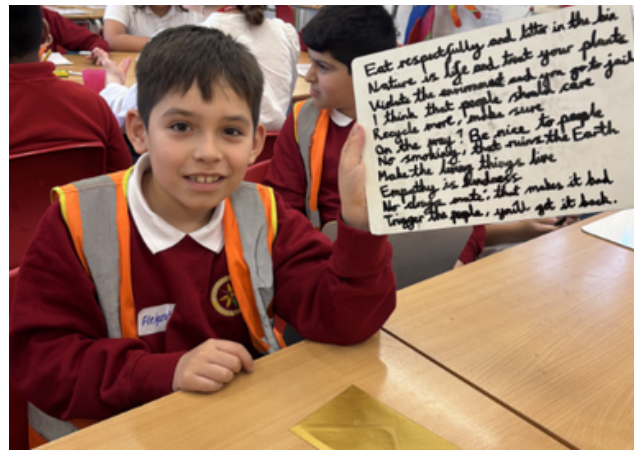
Mehmet M - increase in minutes played

### Top Spelling Shed Groups<sup>®</sup>

#	Group	Score
1.	Rowan	6,864,685
2.	Willow	4,735,379

# Into University

Mulberry class visited a Into University this week to explore creative courses and learn about student life. They discovered subjects like art, design, and creative writing. The highlight was a poetry workshop, where students wrote and shared their own poems, building confidence and creativity. The trip inspired them to think about future opportunities in the arts.



## Nursery Spaces for September

If you are looking for a Nursery space for your child in September 2026, we have morning, afternoon and full time places. Children can start, the term following their third birthday.

Please click [here](#) for more details and to apply.



## Attendance Just Got EPIC!

Guess what? Turning up really can take you places! We're super excited to announce a brilliant attendance surprise for 2026... and it's a BIG one! To celebrate Most Improved Attendance, we're planning to surprise a group of children with an amazing trip to Chessington Theme Park this July. Every child has a chance to win – all it takes is great effort and improved attendance! It's our way of saying well done for showing up, trying hard, and sticking with it. Keep those attendance numbers climbing... because the reward could be a day full of thrills, laughs, and adventure! Save the date: Wednesday 15 July 2026 Celebrating Most Improved Attendance 2026 - Good Luck! - Nora



## SEN Family Adventure



**ISLINGTON PARENT CARER FORUM**

# SEN FAMILY ADVENTURE PLAYGROUND DAY!

A relaxed, inclusive day for children with SEND and their families.

**BANK HOLIDAY MONDAY 4TH MAY** | **11AM - 3PM** | **HAYWARD ADVENTURE PLAYGROUND N7 9PL**

### THINGS TO ENJOY

- ARTS & CRAFTS**  
Get creative and have fun!
- FOOTBALL & FREE PLAY**  
Kick about and enjoy active play!
- ADVENTURE PLAYGROUND & OUTDOOR APPARATUS**  
Climb, explore and challenge yourself!
- WATER PLAY**  
(weather permitting)

### A DAY TO CONNECT

- BRING A BLANKET**  
Enjoy relaxed picnic vibes!
- BUILD COMMUNITY**  
Talk and connect with other families.
- CONNECT WITH PARENT CARERS**  
Share, support and make connections.
- CONNECT WITH OTHER SEN CHILDREN**  
Make friends and have fun together!
- JUDGEMENT-FREE SPACE**  
A safe, welcoming and understanding environment.

**LIGHT REFRESHMENTS AVAILABLE**  
Pizzas, hot bites, snacks and drinks available throughout the day.

**IMPORTANT**  
Parent carers must remain with their children at all times.

**LET'S PLAY, CONNECT & MAKE MEMORIES TOGETHER!**

# Reminder - Dates for your Diary

All important events can be found on the public calendar on the school website

EVENTS	DATES
Year 1 Assembly	TBC WB 18 <sup>th</sup> May
Year 6 Assembly	Date TBC
Mulberry - Into University	Monday 11 <sup>th</sup> May
KS2 SATs Week	Monday 11 <sup>th</sup> May - Friday 15 <sup>th</sup> May
Year 5 - London Zoo Trip	Tuesday 19 <sup>th</sup> May
Year 3 - Kew Gardens Trip	Wednesday 20 <sup>th</sup> May
Year 4 - River Lea Trip	Thursday 21 <sup>st</sup> May

**The Growth Learning Collective**  
A Community of Learners

## Educational Experiences in 2025-26

### Year 1

- Freightliner's City Farm
- London Bus Tour
- Florence Nightingale Museum
- V&A Childhood Museum
- King Henry's Walk Garden

### Year 2

- Tate Modern
- The Monument
- Horniman Museum
- London Zoo
- Hampstead Heath
- Museum of Docklands

### Year 3

- British Museum
- Science Museum
- Pantomime
- Westminster Walk
- London Aquarium
- Kew Gardens
- Mosque Visit

### Year 4

- Science Museum
- Chocolate Museum
- Church Visit
- Ragged School Museum
- River Lea
- Highgate Wood

### Year 5

- Olympic Park
- Science Museum
- British Museum
- Synagogue Visit
- London Zoo
- Southbank

### Year 6

- HMS Belfast
- Jewish Museum
- Ben Kinsella Workshop
- Theatre Trips
- National Portrait Gallery

**DICK WHITTINGTON AND HIS CAT**

A voluntary donation of £24 via Arbor helps fund all the educational visits we offer over the year

Your generous donations help makes trips like these possible, and mean we can offer a range of fantastic learning opportunities!

For more details, or if you have any questions, please speak to us in the office!

### Free School Meal Vouchers during school holidays

Do you qualify for free school meals (FSM) status. Anyone who hasn't applied or whose circumstances may have changed please apply on Islington's Citizen portal to see if you are eligible.  
[Free school meals | Islington Council](#)

### Late Collection Policy

The school applies a late collection charge for children who are not collected from school on time. The Late Collection Policy and charges can be accessed using the following link.  
[Rotherfield Primary School - School Policies](#)

### Support with Childcare

If you are a working parent and require help with Childcare please use the links to see what help is available.  
[Eligibility checker](#) | [Best Start in Life](#)  
[Tax-Free Childcare - GOV.UK](#)  
[Free Childcare for Working Parents: Overview - GOV.UK](#)

### Lettings / Hall Hire

Rotherfield has partnered with Sharesy to make booking our hall simple. Click below view our spaces, prices and availability: <https://www.sharesy.com/v/rotherfield-primary-school>  
 Parents/Carers of pupils attending Rotherfield can email the school for information on available discounted rates.

### Islington Healthy School Advisor

Please click here to see community food services available within Islington  
[Community Food Services - Islington Food Partnership](#)

### Clubs contact info

Should you need to reach a staff member after 4PM regarding your child at after-school club (such as late collection from after school club), please call this number for immediate assistance: 07955184099