



MESSAGE FROM THE HEADTEACHER

Dear Parents and Carers,

What a wonderful end to a great term. The children have been full of energy this week as they enjoyed a wide range of enrichment activities and additional opportunities that truly brought our school community to life.

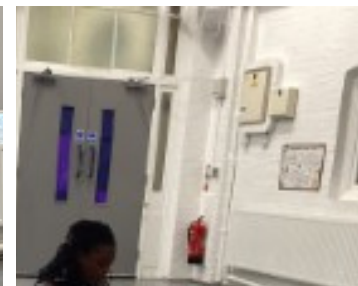
Our Alice in Wonderland performance was a real highlight. The children shone as confident young actors - clear, expressive, and projecting their voices beautifully. They owned the stage, and it was a joy to watch their talent unfold. We are especially proud that one of our pupils has been awarded a scholarship to the Pauline Quirke Academy - an incredible achievement and a testament to their dedication and creativity.

We also enjoyed an amazing cultural afternoon, celebrating the diversity that makes our community so special. It was a powerful reminder of what brings us together and the strength we find in our shared values.

A heartfelt thank you to all our staff and parents for your ongoing support, encouragement, and commitment to our Rotherfield family. It makes all the difference.

THIS WEEKS TOP NEWS - Alice in Wonderland

This week the RF drama club performed 'Alice in Wonderland'. They have been rehearsing since the autumn term after school each week. They showed incredible confidence, talent, charisma and dedication. It was an amazing show and we are so proud of them. True actors!



SCHOOL ATTENDANCE



STARS OF THE WEEK

Whole school: **93.5%**
National: **95%**

Silver birch	96%
Maple	95%
Mulberry	94%
Palm	93%
Elm	93%
Olive	93%
Apple	92%
Pine	92%
Ash	92%
Willow	90%
Cedar	90%
Oak	89%
Rowan	88%
Beech	86%

Top Spelling Shed Groups®

#	Group	Score
1.	Mulberry	11,591,868
2.	Willow	2,952,448
3.	Palm	2,246,470

Well done to all our wonderful children on their hard work this week. The following deserve a special mention for receiving **Star of the week!**

Year 6: Evie, Harumi and Albert

Year 5: Madina and Chase

Year 4: Shaye and Adam

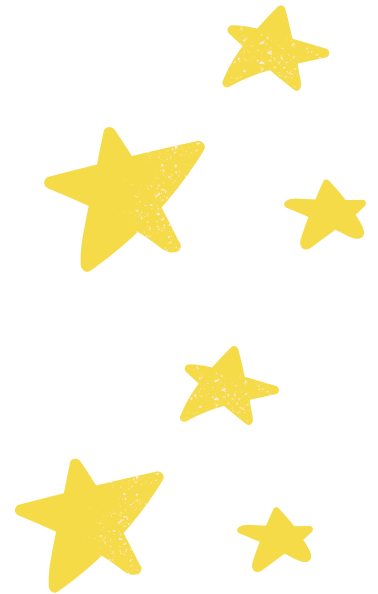
Year 3: Rayyan and Holyjah

Year 2: Huxley and Mila T

Year 1: Manthita

Reception: Adam

Nursery: Jibrail



ATTENDANCE CHAMPIONS

KS1: Aylin (Silver birch)



KS2: Ayuub (Mulberry)

POPCORN PARTY

(as chosen by the pupil voice)

Well done to **Silver birch** class for having the highest attendance this week!



RESPECT CHAMPIONS

KS1: Momoka (Palm)

KS2: Chase (Elm)



Top Rockstar for this week:

TRRS - Ziba (Willow) most improved
TTRA class - Elm



Top Numbot for this week:

Gokhan (Beech) - most levels passed

Reception - Reading through Play Workshop

Children in reception took part in a reading through play workshop. We read 'Where the Wild Things Are' and then children used a range of exciting props to retell the story and think about how the characters feel. It was so exciting! If you have not read this great book before, we recommend it.



1

This week year 6 went to the Finsbury Park Picture House to watch the new Looney Tunes film. It was so much fun and the best way to celebrate the end of SATs and to acknowledge everyone's hard work over the past few months!



Year 5 - Zoo Trip

Year 5 had a fantastic day at the zoo and loved seeing all the different animals, especially the meerkats and penguins! The children were enthusiastic, well behaved, and enjoyed learning about habitats, conservation, and animal adaptations through the talks and activities throughout the day.



Cultural Day



Year 1 Assembly

Year 1 delivered a fantastic performance of The Elves and the Shoemaker on Wednesday, marking the exciting start of their Fairy Tales topic this summer term. Each child spoke their lines with confidence, and it was wonderful to see how well they remembered and delivered them. We are incredibly proud of all of them for their hard work and enthusiasm!



'Healthy' Packaging

Many snacks marketed to children appear healthy at first glance. Bright colours, cartoon characters, words like "natural", "fruit-based", "wholegrain", or "no added sugar" can make products seem like good choices for lunchboxes. However, the nutrition label on the back often tells a very different story.

A useful habit is to check the traffic light labels and ingredients list rather than relying on the front of the packet. Some products aimed at children contain surprisingly high levels of sugar, salt, flavourings, and additives, even when advertised as healthy snacks.

As a general guide:

- * Green traffic lights usually indicate lower amounts of fat, salt, and sugar.
- * Amber means moderate amounts.
- * Red means high amounts and should be eaten occasionally.

It is also important to remember that "no added sugar" does not always mean low sugar. Fruit concentrates and purées can still contain large amounts of natural sugars, especially in sticky snacks such as fruit strips or fruit rolls.

Simple foods are often the healthiest choices:

- * Fresh fruit
- * Plain yoghurt
- * Cheese
- * Homemade sandwiches or wraps
- * Vegetable sticks
- * Boiled eggs
- * Oatcakes or crackers

PUT A TRAFFIC LIGHT ON EVERY FOOD

All measures per 100g	LOW A healthier choice	MED OK most of the time	HIGH Just occasionally
Fat	3g or less	3.1g - 17.5g	More than 17.5g
Saturates	1.5g or less	1.6g - 5g	More than 5g
Sugars	5g or less	5.1g - 22.5g	More than 22.5g
Salt	0.3g or less	0.31g - 1.5g	More than 1.5g

High Fibre = 6g or more fibre per 100g



Healthy eating does not need to be expensive or complicated. Small, consistent changes help children develop lifelong eating habits, support concentration in class, and improve overall wellbeing.

Term Time dates

Term Dates - 2026 - 2027

AUTUMN TERM	INSET Day 1 & 2 - Wednesday 2 nd & Thursday 3 rd September 2024 INSET Day 3 - Monday 22 nd November 2026
Autumn term 1	Friday 4 th September - Friday 23 rd October
Autumn half-term	Monday 26 th October - Friday 30 th October
Autumn term 2	Tuesday 3 rd November - Friday 18 th December
Christmas holidays	Monday 21 st December - Friday 2 nd January
SPRING TERM	INSET Day 4 - Monday 4 th January 2027 INSET Day 5 - Monday 22 nd February 2027
Spring term 1	Tuesday 5 th January - Friday 19 th February
Spring half-term	Monday 15 th February - Friday 19 th February
Spring term 2	Tuesday 23 rd February - Thursday 25 th March
Easter holiday	Friday 26 th March - Friday 9 th April
SUMMER TERM	
Summer term 1	Monday 12 th April - Friday 28 th May
Summer half-term	Monday 31 st May - Friday 4 th June
Summer term 2	Monday 7 th June - Thursday 22 nd July
Summer holiday	Last day of term Thursday 22 nd July 2027

Please click [here](#) to view the term time dates for this year and next academic year.



Club Timetable

Enrichment Club bookings are now open on Arbor! Please contact the office if you need any help with bookings.

Rotherfield Primary School - After School Clubs

Monday	Tuesday	Wednesday	Thursday	Friday
Breakfast Club 7:45 - 8:55	Breakfast Club 7:45 - 8:55	Breakfast Club 7:45 - 8:55	Breakfast Club 7:45 - 8:55	Breakfast Club 7:45 - 8:55
Free Clubs • Crafting • Art • Football (Years 5/6) Please note these clubs will start from 8 th June and Arbor Bookings will open after half term	Turkish Years 1-6 3:30 - 4:30 (£1 per class for all children)	Gymnastics Years Reception-6 3:30 - 4:30	Drama and Public Speaking (contact provider to book)	Football Years 2-5
After School Club 3:30 - 4:30 4:30 - 6:30 3:30 - 6:30	After School Club 3:30 - 4:30 4:30 - 6:30 3:30 - 6:30	After School Club 3:30 - 4:30 4:30 - 6:30 3:30 - 6:30	After School Club 3:30 - 4:30 4:30 - 6:30 3:30 - 6:30	After School Club 3:30 - 4:30 4:30 - 6:30 3:30 - 6:30

Reminder - Dates for your Diary

All important events can be found on the public calendar on the school website

EVENTS	DATES
Back to school	Monday 1 st June
Year 6 - Into University	Wednesday 3 rd June
Year 2 - Hampstead Heath Trip	Monday 8 th June
Sports Day (Y1, 2 & 3) AM	Tuesday 9 th June AM
Sports Day (Y4, 5 & 6) PM	Tuesday 9 th June PM
Year 1 - The Young V & A Museum Trip	Wednesday 10 th June
Fluoride Varnish (Nursery - Year 2)	Friday 12 th June
Year 6 Show	Wednesdy 15 th June @2pm
Year 6 - Leavers Assembly	Thursday 16 th June @9:30am

Educational Experiences in 2025-26

Year 1
 Freightliner's City Farm
 London Bus Tour
 Florence Nightingale Museum
 V&A Childhood Museum
 King Henry's Walk Garden

Year 2
 Tate Modern
 The Monument
 Horniman Museum
 London Zoo
 Hampstead Heath
 Museum of Docklands

Year 3
 British Museum
 Science Museum
 Pantomime
 Westminster Walk
 London Aquarium
 Kew Gardens
 Mosque Visit

Year 4
 Science Museum
 Chocolate Museum
 Church Visit
 Ragged School Museum
 River Lea
 Highgate Wood

Year 5
 Olympic Park
 Science Museum
 British Museum
 Synagogue Visit
 London Zoo
 Southbank

Year 6
 HMS Belfast
 Jewish Museum
 Ben Kinsella Workshop
 Theatre Trips
 National Portrait Gallery

A voluntary donation of £24 via Arbor helps fund all the educational visits we offer over the year

Your generous donations help makes trips like these possible, and mean we can offer a range of fantastic learning opportunities!

For more details, or if you have any questions, please speak to us in the office!

Rotherfield Primary School
 Rotherfield Street, London, H1 8BE
 Tel: 020 7252 4400
 Email: office@rotherfieldprimary.co.uk
www.rotherfieldprimaryschool.co.uk
 Executive Headteacher: Paul Thomas
 Head of School: Hs Silverwood

RE: TERM TIME LEAVE - UNAUTHORISED ABSENCE - MEDICAL ABSENCE

Dear Parent/Carer,

Along with all Islington schools, Rotherfield Primary has a legal duty to ensure that pupils' attendance is as good as possible, and to investigate all absence so that the reasons are fully understood. Regular attendance is essential in ensuring that every child receives the education and care they are entitled to.

We are pleased to see that attendance at Rotherfield Primary has been improving, and we are grateful to the many parents and carers who consistently support the school by ensuring their children are present and punctual every day. However, one of the most frequent causes of absence continues to be unauthorised holidays and leave during term time, including travel abroad. These absences most commonly occur at the beginning or end of each term, and they significantly disrupt children's learning.

Please be reminded that it is against the law for parents or carers to take children out of school for holidays or other unauthorised leave during term time. Leave can only be granted in exceptional circumstances, in line with Islington guidance. Please note that exceptional circumstances do not typically include travelling abroad to visit sick relatives. Any requests for leave must be made in advance and will be considered on an individual basis.

We strongly advise parents not to book holidays, travel, or flights during term time under any circumstances. The school will closely review all absence requests, and where applicable, consider any evidence submitted regarding exceptional circumstances. Parents who choose to take unauthorised leave, including overseas travel, may be issued with a warning and a penalty notice by the Local Authority of £80 (rising to £160 if unpaid on time) per parent per student. In addition, please be aware of our strengthened procedures regarding fines.

The school will not authorise illness related absences lasting more than three days unless medical evidence is provided by a healthcare professional.

Acceptable forms of evidence include:

- A medical certificate or sick note (if issued), or
- A printout from the clinic or GP reception confirming the date of your child's appointment or visit.

If you are unable to secure a medical appointment or leave your property, please inform the school. In these cases, we can arrange a home visit from our safeguarding team to support you and verify your child's wellbeing.

Our aim is to provide any parent or carer leaving school in a position where penalty notices or attendance actions become necessary. This letter is to ensure that all families are fully aware of the rules and expectations around attendance, term-time leave, and illness evidence requirements.

If you have any questions, or if you would like to discuss any part of this letter with a member of staff, please contact the school office or email the school and a member of staff will contact you back at a mutually agreeable time.

Yours sincerely,
 Safeguarding Team
 Rotherfield Primary

Free School Meal Vouchers during school holidays

Do you qualify for free school meals (FSM) status. Anyone who hasn't applied or whose circumstances may have changed please apply on Islington's Citizen portal to see if you are eligible.
[Free school meals](#) | [Islington Council](#)

Late Collection Policy

The school applies a late collection charge for children who are not collected from school on time. The Late Collection Policy and charges can be accessed using the following link.
[Rotherfield Primary School - School Policies](#)

Support with Childcare

If you are a working parent and require help with Childcare please use the links to see what help is available.
[Eligibility checker](#) | [Best Start in Life](#)
[Tax-Free Childcare - GOV.UK](#)
[Free Childcare for Working Parents: Overview - GOV.UK](#)

Lettings / Hall Hire

Rotherfield has partnered with Sharesy to make booking our hall simple. Click below view our spaces, prices and availability: <https://www.sharesy.com/v/rotherfield-primary-school>
 Parents/Carers of pupils attending Rotherfield can email the school for information on available discounted rates.

Islington Healthy School Advisor

Please click here to see community food services available within Islington
[Community Food Services - Islington Food Partnership](#)

Clubs contact info

Should you need to reach a staff member after 4PM regarding your child at after-school club (such as late collection from after school club), please call this number for immediate assistance: 07955184099