



MESSAGE FROM THE HEADTEACHER

Dear Parents and Carers,

The summer term is well under way and the calendar is as busy as ever. The children have now completed both the Phonics Screening Check and the Multiplication Tables Check, and early indicators show that our pupils are once again performing above national expectations. This is a testament to their hard work and the dedication of staff supporting them throughout the year. Children in Years 3,4, and 5 will have their assessment week next week.

We also marked Pride Month with a thoughtful whole-school assembly led by Rosa, helping children understand why Pride matters and how inclusion, respect, and celebrating difference strengthen our community.

Finally, a reminder that our **PTA's Rotherfest takes place on 11th July** — a fantastic opportunity to come together, enjoy the day, and support the school's fundraising efforts. We encourage families to sign up, get involved, and help make the event a great success!

THIS WEEKS TOP NEWS - Sports Day

Despite the challenging weather, Tuesday's Sports Day was a fantastic success. Although the morning was unfortunately a washout, our pupils showed tremendous resilience and enthusiasm, refusing to let the rain dampen their spirits. As conditions improved, the children took part in a range of races and activities, demonstrating excellent determination, teamwork and sportsmanship throughout the day. It was wonderful to see pupils encouraging one another, celebrating achievements and giving their very best effort. The positive attitude shown by all of the children was a real credit to our school. We are incredibly proud of everyone who took part and helped make the day such an enjoyable occasion. Thank you for your continued support, and a special thank you to all the parents and family members who attended and helped create such a positive atmosphere. Your encouragement and support played a huge part in making Sports Day a memorable and successful event for all.



SCHOOL ATTENDANCE

Whole school: **93.5%**
National: **95%**

Rowan	99%
Olive	98%
Silver birch	97%
Maple	94%
Mulberry	94%
Elm	93%
Apple	93%
Beech	92%
Pine	92%
Willow	92%
Ash	90%
Palm	90%
Oak	88%
Cedar	87%

Top Spelling Shed Groups*

#	Group	Score
1.	Willow	3,337,350
2.	Elm	986,450
3.	Rowan	794,219



STARS OF THE WEEK

Well done to all our wonderful children on their hard work this week. The following deserve a special mention for receiving **Star of the week!**

Year 6: Diego and Tillie

Year 5: Osama, Hawa and Cian

Year 4: Willow and Rowan for MTC

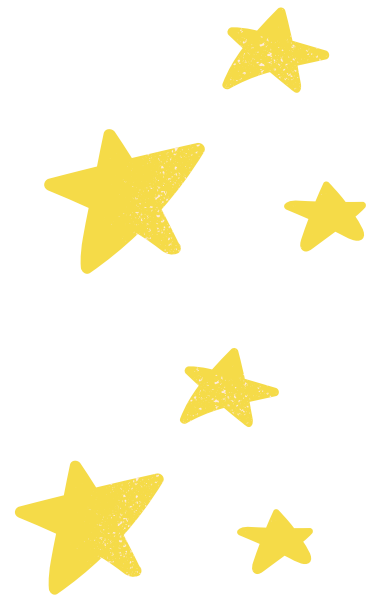
Year 3: Shihab and Manasse

Year 2: Omar and Halima

Year 1: Danny

Reception: Avika

Nursery: Jibrail



ATTENDANCE CHAMPIONS

KS1: Aylin (Silver birch)



KS2: Goldie (Rowan)

POPCORN PARTY

(as chosen by the pupil voice)

Well done to **Silver birch** class for having the highest attendance this week!



RESPECT CHAMPIONS

KS1: Holyjah (Silver Birch)



KS2: Yusra (Elm)



Top Rockstar for this week:

Renee for biggest improvement in studio speed

Rowan class for most active players



Top Numbot for this week:

Killian B - biggest increase in minutes played

The Children's Book Project

This week we had an incredible donation of wonderful books from The Children's Book Project. Every child from nursery to year 5 got given a book to keep and take home. We are so thrilled to be able to spread the joy of reading and hope that our children love reading and re-reading their books.

If you want any advice about how to develop a love of reading in your child, please come and chat with Rosa. There are also lots of websites that offer advice about how to encourage reading at home: [How to support your child's reading at home - BBC Bitesize](#)

Coding & Chess Club



CODING AND CHESS CLUB
THURSDAY AT THE START OF LUNCH IN THE MUR
30 MINUTES, FROM 12:30-1:00
PLAY CHESS OR LEARN TO CODE A COMPUTER

The poster features a chessboard with pieces and a green circuit board icon.

Chess club and coding club will be running every Thursday in the MUR at the start of lunch. This will run every Thursday until the end of term. All abilities welcome, even those who have never played chess or done coding before. Open to children from year 1 to 6.

Just arrive at the MUR at 12:30 when lunch starts, children will be taken get lunch after the club. We've gained some wonderful new children recently and this club would be a great way for them to make friends and learn some new skills.

Poetry Retreat

Jonny visited this week to present the newly published anthologies from the Year 5 Poetry Retreat, and the work was nothing short of exceptional. It was inspiring to hear directly from the children as they shared spontaneous poems written that very morning, each one reflecting how poetry has shaped their thinking, confidence, and sense of expression. The authenticity and emotional insight in their writing made the experience truly memorable, and it was a privilege to witness the impact this retreat has had on their creative lives



The Mystery Hulk Cake

Last week, Rotherfield pupils were treated to a very special dessert: our bright green Hulk Cake! The colourful cake immediately caught everyone's attention, and before revealing the ingredients, chef Tiago challenged the children to become food detectives and guess the flavour.

The suggestions came thick and fast! Some pupils guessed matcha, others thought it might be pistachio, while a few brave guesses included kale, green beans and even lettuce.

Then came the big reveal...

The secret ingredient was peas!

The reaction was priceless. Many children were amazed that a cake made with peas could taste so good. One Year 6 pupil summed it up perfectly:

"It was a very good cake, although it was made out of peas!"

We also celebrated some fantastic food bravery. Frankie proudly told us that he loved "the brown bits", which gave everyone a good laugh and showed just how willing our pupils are becoming to explore new foods and flavours.

For a first attempt at a vegetable cake, we think it was a great success!

Moments like these remind us that healthy food can be colourful, exciting, surprising and, most importantly, delicious. By encouraging children to try new foods in a fun and positive way, we help them build confidence, curiosity and lifelong healthy eating habits.

Well done to our fearless Rotherfield food explorers!



Reminder - Dates for your Diary

All important events can be found on the public calendar on the school website

EVENTS	DATES
Year 4 Trip - Kenwood House	Thursday 18 th June
Year 6 - Leavers Assembly	Thursday 16 th June @9:30am
Year 4 - Cricket Tournament	Wednesday 24 th June
EYFS Sports Day AM	Tuesday 30 th June
Year 3 trip - Southbank	Wednesday 8 th July
Photo Exhibition	Wednesday 8 th July @2-4pm
Year 6 Show	Wednesday 15 th July @2pm

Educational Experiences in 2025-26

Year 1

- Freightliner's City Farm
- London Bus Tour
- Florence Nightingale Museum
- V&A Childhood Museum
- King Henry's Walk Garden

Year 2

- Tate Modern
- The Monument
- Horniman Museum
- London Zoo
- Hampstead Heath
- Museum of Docklands

Year 3

- British Museum
- Science Museum
- Pantomime
- Westminster Walk
- London Aquarium
- Kew Gardens
- Mosque Visit

Year 4

- Science Museum
- Chocolate Museum
- Church Visit
- Ragged School Museum
- River Lea
- Highgate Wood

Year 5

- Olympic Park
- Science Museum
- British Museum
- Synagogue Visit
- London Zoo
- Southbank

Year 6

- HMS Belfast
- Jewish Museum
- Ben Kinsella Workshop
- Theatre Trips
- National Portrait Gallery

A voluntary donation of £24 via Arbor helps fund all the educational visits we offer over the year

Your generous donations help makes trips like these possible, and mean we can offer a range of fantastic learning opportunities!

For more details, or if you have any questions, please speak to us in the office!

Free School Meal Vouchers during school holidays

Do you qualify for free school meals (FSM) status. Anyone who hasn't applied or whose circumstances may have changed please apply on Islington's Citizen portal to see if you are eligible.
[Free school meals | Islington Council](#)

Late Collection Policy

The school applies a late collection charge for children who are not collected from school on time. The Late Collection Policy and charges can be accessed using the following link.
[Rotherfield Primary School - School Policies](#)

Support with Childcare

If you are a working parent and require help with Childcare please use the links to see what help is available.
[Eligibility checker](#) | [Best Start in Life](#)
[Tax-Free Childcare - GOV.UK](#)
[Free Childcare for Working Parents: Overview - GOV.UK](#)

Lettings / Hall Hire

Rotherfield has partnered with Sharesy to make booking our hall simple. Click below view our spaces, prices and availability: <https://www.sharesy.com/v/rotherfield-primary-school>
 Parents/Carers of pupils attending Rotherfield can email the school for information on available discounted rates.

Islington Healthy School Advisor

Please click here to see community food services available within Islington
[Community Food Services - Islington Food Partnership](#)

Clubs contact info

Should you need to reach a staff member after 4PM regarding your child at after-school club (such as late collection from after school club), please call this number for immediate assistance: 07955184099