



MESSAGE FROM THE HEADTEACHER

Dear Parents and Carers,

This week has been a particularly special one as we have welcomed a number of new children to Rotherfield across several year groups. We have been incredibly proud of how warmly our pupils have embraced these newcomers - showing kindness, friendship and a real sense of responsibility in helping them settle so quickly. It is wonderful to see our school community continue to grow in such a positive way.

In Year 4, children have begun their Multiplication Tables Check assessments, and it has been fantastic to see their months of hard work and practice paying off with growing confidence and accuracy. Meanwhile, our Year 1 pupils will be taking part in the Phonics Screening Check next week. We are so proud of their dedication and resilience, and we greatly appreciate the invaluable support they have received at home—this truly makes a difference. We would also like to recognise the commitment of our staff, who work tirelessly to ensure every child feels prepared and confident.

Looking ahead, there is much to be excited about in Summer 2. We are particularly looking forward to our Year 1–6 Sports Day next week, followed by the Early Years Sports Day on Tuesday 30th June. Please ensure your child comes to school wearing appropriate footwear and with a water bottle so they are ready to fully enjoy these events.

RIGHT OF THE MONTH - Article 22:

This month, we are learning about Article 22 of the United Nations Convention on the Rights of the Child, which focuses on the rights of children who are refugees or seeking asylum.

Article 22 states that children who have had to leave their home country should receive protection, support and access to education and other essential services. It reminds us that every child has the right to feel safe, included and valued.

This article links closely to Refugee Week (15–21 June), a national celebration of the contributions, resilience and experiences of refugees. Through class discussions and activities, children will explore the importance of kindness, empathy and creating communities where everyone feels they belong.

At Rotherfield, we are proud to celebrate diversity and ensure that all children are welcomed, supported and able to thrive.



SCHOOL ATTENDANCE

Whole school: **93.5%**
National: **95%**

Mulberry	96.3%
Rowan	96%
Maple	95%
Olive	95%
Ash	93%
Silver birch	92%
Willow	90%
Pine	90%
Cedar	89%
Oak	88%
Apple	88%
Beech	87%
Elm	86%
Palm	86%

Top Spelling Shed Pupils

#	Avatar	Pupil	Group	Score
1.		Ceil, Ronan	Willow	4522.416
2.		Ahmadou, Attou	Mulberry	3716.000
3.		Quinn, Brooklyn	Willow	1312.196



STARS OF THE WEEK

Well done to all our wonderful children on their hard work this week. The following deserve a special mention for receiving **Star of the week!**

Year 6: Rumaysa and Liliabba

Year 5: Alejandro and Ivy F

Year 4: Zayan and Abdul

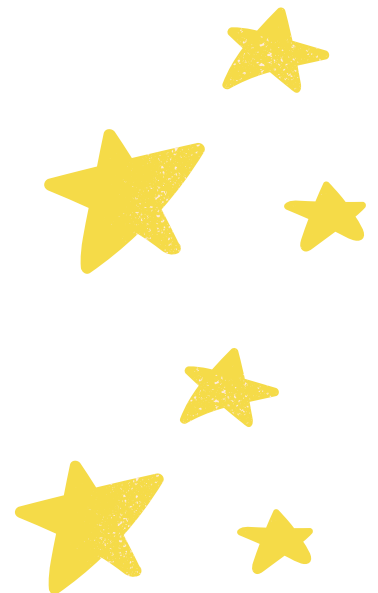
Year 3: Axel and Musa

Year 2: Ollie and Halima

Year 1: Tyler

Reception: Reuben

Nursery: Mohammed



ATTENDANCE CHAMPIONS

KS1: Suhayla (Oak)

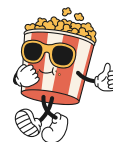


KS2: Skylar (Elm)

POPCORN PARTY

(as chosen by the pupil voice)

Well done to **Silver birch** class for having the highest attendance this week!



RESPECT CHAMPIONS

KS1: Ollie (Maple)

KS2: Grace (Olive)



Top Rockstar for this week:

Biggest improvement in accuracy - Zayan.A

Ash - Highest accuracy



Top Numbot for this week:

Amber M

Ben Kinsella Trust

Our Year 6 pupils took part in an engaging and thought-provoking visit to the Ben Kinsella Trust, where they explored the themes of choices, consequences and personal safety through an immersive, interactive exhibition. The workshop guided children through real-life scenarios linked to Ben Kinsella's story, helping them understand how small decisions can have a big impact. Through drama, multimedia and discussion, pupils learned about peer influence, the law, and the importance of making positive, safe choices as they prepare for secondary school. The experience had a powerful effect on our pupils, strengthening their empathy, confidence and awareness of how to stay safe in their communities. Children came away with a clearer understanding of the consequences of risky behaviour, as well as practical strategies for resisting peer pressure and seeking help when needed. This workshop not only supported our PSHE curriculum but also equipped our Year 6s with valuable life skills they will carry forward.



Into University

This week, year 6 took part in an Into University workshop. We spent time thinking about the upcoming transition to secondary school; what to expect; how to prepare; and how to do our best when we get there. It was such a useful workshop for pupils to take part in at this stage – with such a big transition approaching!



Around the World in an Afternoon 2026

Year 6 hosted our annual language teaching event brilliantly again this year! They transformed their classrooms into airport terminals, equipped with desks for lots of different languages. They welcomed all children from Y1 to Y5, gave them a passport, taught them some new language and stamped the passports to show the younger children how many new languages they had used. Thanks go to Tiago, Bernadine, Emily, Kene, Matthew, Laura and Dami who also did some language teaching. We can't wait until next year's event!



Healthier Packed Lunches: Small Changes, Big Impact

We have been delighted to see more and more children making positive changes to their packed lunches this term. Many families have embraced our Healthy School approach and are finding simple ways to make packed lunches more balanced and nutritious.

Bonnie, for example, has swapped crisps for popcorn, chosen one of her favourite fruits, watermelon, included a yoghurt, and brought water instead of squash. These may seem like small changes, but they are excellent examples of how healthier choices can fit easily into everyday lunches.

Across the school, many other children are doing the same. We would like to say a huge thank you to all the parents and carers who are making an effort to support these positive habits.

Healthy eating habits developed in childhood can have lifelong benefits. Choosing nutritious foods more often helps support children's growth, concentration, dental health, energy levels and overall wellbeing.

It has been wonderful to see children becoming more open to trying healthier options, and we look forward to continuing this journey together!



Reminder - Dates for your Diary

All important events can be found on the public calendar on the school website

EVENTS	DATES
Year 2 - Hampstead Heath Trip	Monday 8 th June
Sports Day (Y1, 2 & 3) AM	Tuesday 9 th June AM
Sports Day (Y4, 5 & 6) PM	Tuesday 9 th June PM
Year 1 - The Young V & A Museum Trip	Wednesday 10 th June
Fluoride Varnish (Nursery - Year 2)	Friday 12 th June
Year 6 Show	Wednesdy 15 th June @2pm
Year 6 - Leavers Assembly	Thursday 16 th June @9:30am
EYFS Sports Day AM	Tuesday 30 th June

Educational Experiences in 2025-26

Year 1
 Freightliner's City Farm
 London Bus Tour
 Florence Nightingale Museum
 V&A Childhood Museum
 King Henry's Walk Garden

Year 2
 Tate Modern
 The Monument
 Horniman Museum
 London Zoo
 Hampstead Heath
 Museum of Docklands

Year 3
 British Museum
 Science Museum
 Pantomime
 Westminster Walk
 London Aquarium
 Kew Gardens
 Mosque Visit

Year 4
 Science Museum
 Chocolate Museum
 Church Visit
 Ragged School Museum
 River Lea
 Highgate Wood

Year 5
 Olympic Park
 Science Museum
 British Museum
 Synagogue Visit
 London Zoo
 Southbank

Year 6
 HMS Belfast
 Jewish Museum
 Ben Kinsella Workshop
 Theatre Trips
 National Portrait Gallery

A voluntary donation of £24 via Arbor helps fund all the educational visits we offer over the year

Your generous donations help makes trips like these possible, and mean we can offer a range of fantastic learning opportunities!

For more details, or if you have any questions, please speak to us in the office!

ROTHERFIELD PRIMARY PHOTO EXHIBITION

Our Lives, Our Culture, Our London

Wednesday 8 July 2PM-4PM
Performance Hall
PARENTS WELCOME FROM 3:30PM

Free School Meal Vouchers during school holidays

Do you qualify for free school meals (FSM) status. Anyone who hasn't applied or whose circumstances may have changed please apply on Islington's Citizen portal to see if you are eligible.
[Free school meals | Islington Council](#)

Late Collection Policy

The school applies a late collection charge for children who are not collected from school on time. The Late Collection Policy and charges can be accessed using the following link.
[Rotherfield Primary School - School Policies](#)

Support with Childcare

If you are a working parent and require help with Childcare please use the links to see what help is available.
[Eligibility checker | Best Start in Life](#)
[Tax-Free Childcare - GOV.UK](#)
[Free Childcare for Working Parents: Overview - GOV.UK](#)

Lettings / Hall Hire

Rotherfield has partnered with Sharesy to make booking our hall simple. Click below view our spaces, prices and availability: <https://www.sharesy.com/v/rotherfield-primary-school>
 Parents/Carers of pupils attending Rotherfield can email the school for information on available discounted rates.

Islington Healthy School Advisor

Please click here to see community food services available within Islington
[Community Food Services - Islington Food Partnership](#)

Clubs contact info

Should you need to reach a staff member after 4PM regarding your child at after-school club (such as late collection from after school club), please call this number for immediate assistance: 07955184099