

MESSAGE FROM THE HEADTEACHER

Dear parents and carers,

This week we started a new UN Article as part of our Rights Respecting Schools journey. Article 29 is all about being the best we can be. It talks about how schools have the responsibility to develop and nurture children's talents as well as their academic outcomes. In this week's newsletter we can really see that in action, with a feature on our new individual music lessons to develop our budding musicians and also the amazing Into University programme that year 6 are following, which is inspiring them to dream big about the futures they want to have.

On Tuesday, we welcomed our Islington professional partner who visits each term to see the progress of the school. I was delighted yet again with the outcome of the visit. The behaviour in each class was exemplary, with children focused and participating brilliantly. He also commented on the high standards of teaching and learning happening across the school, so well done to all our brilliant teachers! We are very lucky to have such a great team.

Have a great weekend - Nia

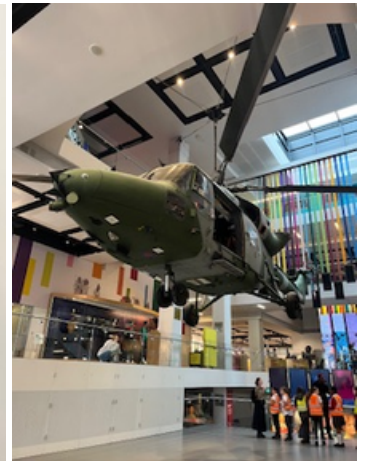
THIS WEEKS TOP NEWS -

This week, Year 6 took part in an exciting four-day programme with Into University, packed with enriching activities linked to our History curriculum and Black History Month.

The week began with a series of World War II workshops, where pupils explored the Allied and Axis powers, propaganda, and the Windrush generation. On Tuesday, they learned about university life and future career pathways, while developing key skills such as teamwork, communication, and presentation.

On Wednesday, the class visited the National Army Museum, where our knowledgeable Into University tutors led engaging sessions and tours linked to our WW2 topic. The week concluded with a visit to Queen Mary University, where pupils enjoyed a guided campus tour before celebrating their Into University Graduation - complete with caps and gowns!

Our Year 6 pupils demonstrated exemplary behaviour throughout the week and were a credit to the school. A heartfelt thank you to the Into University team for providing such a valuable and inspiring experience for our children.



SCHOOL ATTENDANCE

Whole school: **91.5%**
National: **95%**

Rowan	98%
Apple	97%
Palm	96%
Maple	94%
Beech	93%
Ash	92%
Mulberry	91%
Olive	91%
Pine	91%
Cedar	89%
Elm	87%
Oak	86%
Willow	85%
Silver birch	84%



STARS OF THE WEEK

Well done to all our wonderful children on their hard work this week. The following deserve a special mention for receiving **Star of the week!**

Year 6: Thiago, Harumi and Emmanuella

Year 5: Ayuub and George

Year 4: Azra and Eline

Year 3: Deanara and Julia

Year 2: Max and Elsie

Year 1: Suhayla

Reception: Liyana

Nursery: Azaan



Top class for this week:

Rowan

Top Rockstar for this week:

Emmanuella (Ash)

RESPECT CHAMPIONS

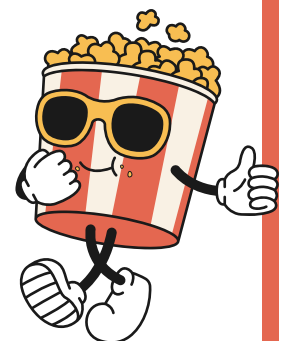
KS1: Berzan

KS2: Defne

POPCORN PARTY

(as chosen by the pupil voice)

Well done to **Rowan** class for having the highest attendance this week!

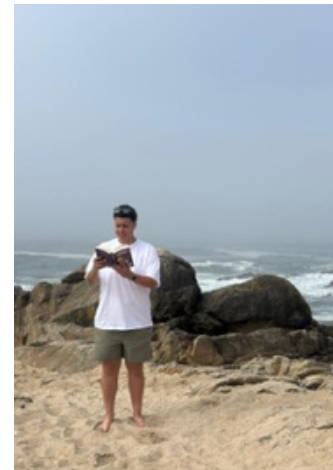


Get Caught Reading Competition

The Get Caught Reading Competition deadline is approaching.

Email the photos of your child reading outside of school by the 17th October to - admin@rotherfieldprimary.co.uk

Here are some of our staff to inspire you!



Music Lessons

We are very excited to have small group piano and guitar lessons starting at Rotherfield this term! Children are now learning with Dario from the Islington music hub, and have the opportunity to play in our lunch time school band. Piano students get to play on our brand new keyboards!

But what do the children think?

Learning guitar, Lias in maple class says "Hmmm.... Some advice is, when you want to change the high E, all you got to do is hold the high E at the very top and its going to change the sound. You can also turn your guitar into a drum!" Khairi from Silver birch also playing guitar adds 'If you hit the string too high..... like this... (Twang!!) it will break!" A new piano player from Willow is Elijah. He would like to tell everyone "Never give up!" And Arthur L in Pine agrees "It's a little tricky and keep on practicing" Lastly Malaya in Elm quips 'Get more kids to grow up to be amazing and never give up on your dreams"

We hope to keep this programme for many years to come. If your child is interested in learning piano or guitar, please let the office know and we will place you on our waiting list. Lessons currently cost £79 per term, to cover the cost of the visiting tutor.



REMINDERS - DATES FOR YOUR DIARY

All important events can be found on the public calendar on the school website

EVENTS	DATES
Parent/Carer Reader Drop-in Sessions	Wednesday 15 th October @9-9:20
Parent/Carer Reader Drop-in Sessions	Thursday 16 th October @9-9:20
Black History Month Exhibition	Wednesday 22 nd October
Year 4 Assembly	Thursday 23 rd October @9:10
Year 2 Trip - The Monument	Wednesday 5 th November
Parents and carers evening	Wednesday 5 th and Thursday 6 th November
Year 5 Assembly	Wednesday 2 nd December @9:10
Early Years Nativity	Tuesday 16 th December @9:15
Year 2 Assembly	Wednesday 11 th February @9:10
Year 3 Assembly	Thursday 26 th March @9:10
Year 1 Assembly	Tuesday 5 th May @9:10
Year 6 Assembly	Date TBC

Parent/Carer Reader Drop-in sessions

Come into your child's class to share some lovely stories and have a look at some engaging books.

The sessions are from 9-9.20am. Come to the office and a member of staff will take you to the class.

KS1 and EYFS - 15/10/25 9-9.20am
KS2 - 16/10/ 25 9-9.20am

Late Collection Policy

The school applies a late collection charge for children who are not collected from school on time. The Late Collection Policy and charges can be accessed using the following link.

[Rotherfield Primary School - School Policies](#)

Support with Childcare

If you are a working parent and require help with Childcare please use the links to see what help is available.

[Eligibility checker](#) | [Best Start in Life](#)

[Tax-Free Childcare - GOV.UK](#)

[Free Childcare for Working Parents: Overview - GOV.UK](#)

Lettings / Hall Hire

Rotherfield has partnered with Sharesy to make booking our hall simple. Click below view our spaces, prices and availability: <https://www.sharesy.com/v/rotherfield-primary-school>
 Parents/Carers of pupils attending Rotherfield can email the school for information on available discounted rates.

Islington Healthy School Advisor

Please click here to see community food services available within Islington
[Community Food Services - Islington Food Partnership](#)

Clubs contact info

Should you need to reach a staff member after 4PM regarding your child at after-school club (such as late collection from after school club), please call this number for immediate assistance: 07955184099