



MESSAGE FROM THE HEADTEACHER

Dear Parents and Carers,

This week is the start of Anti Bullying Week, with the theme: Power for Good. Today, adults and children being encouraged to wear odd socks to celebrate what makes us all unique. Our Right of the Month for November, is Article 19, which links well with Anti Bullying Week. In our Rights Respecting Assembly, we will be discussing Article 19 and Anti Bullying Week. For any parents who are interested, you can find some resources to discuss with your child at home from the anti bullying alliance: <https://anti-bullyingalliance.org.uk/anti-bullying-week-2025/parents-and-carers>



This week, we also marked remembrance day with assemblies and observing the silence to remember all of those who have sacrificed themselves in the line of duty. At school, we take this opportunity to learn about the importance of peace, gratitude, and the lessons of history. It's a moment to reflect on the courage of those who served—and to hope for a more peaceful future.



It was great to see our Year 6 pupils taking the lead on fundraising on Thursday through their very own bake sale. The children are raising money for some very exciting Year books which will capture their journey through school and will be a special memory for them in the future.

You will find a lot of attendance update in the newsletter this week. The government are now setting new attendance targets for schools which will share with you shortly.

Have a lovely weekend.

THIS WEEK'S TOP NEWS - Rights of the Month

NOVEMBER'S RIGHT OF THE MONTH: EVERY CHILD HAS THE RIGHT TO BE KEPT SAFE AND PROTECTED FROM HARM

This November, Rotherfield is focusing on Article 19 from the United Nations Convention on the Rights of the Child. This important article states that every child has the right to be kept safe and protected from harm.

At school, we are helping children understand what this means in everyday life:

- Every child should feel safe at school, at home, and everywhere they go.
- Adults have a responsibility to look after children and make sure they are not hurt.
- If something feels wrong, children should know they can tell someone and get help.

We are linking this right to two key events this month:

Anti-Bullying Week (starting 10th November)

This week and into next, children will be learning about kindness, how to stand up to bullying, and how to support one another to feel safe and happy.



SCHOOL ATTENDANCE

Whole school: **92.5%**
National: **95%**

Olive	100%
Apple	100%
Beech	99%
Rowan	96%
Elm	96%
Cedar	94%
Mulberry	91%
Maple	91%
Palm	90%
Pine	90%
Ash	89%
Silver birch	88%
Oak	88%
Willow	82%



STARS OF THE WEEK

Well done to all our wonderful children on their hard work this week. The following deserve a special mention for receiving **Star of the week!**

Year 6: Kuzey, Zainab and Cassie

Year 5: Aras A and Gokhan

Year 4: Blessing and Lilly

Year 3: Skye and Mateo

Year 2: Deon and Mikaylia

Year 1: Tyler

Reception: Rosie

Nursery: Kayan



Top class for this week:

ASH

Top Rockstar for this week:

Berkay.C

RESPECT CHAMPIONS

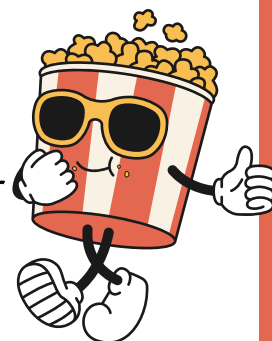
KS1: Deanara
(Palm)

KS2: Lily.F (Ash)

POPCORN PARTY

(as chosen by the pupil voice)

Well done to **Olive** class for
having the highest
attendance this week!



El Día De Los Muertos

Last week, the children imagined they were in Mexico learning about 'El Día de los Muertos'! Every class had a special lesson and Year 5 were our party planners, preparing our decorations. Tiago and his team cooked a delicious celebratory lunch for the whole school, accompanied by Mexican and Spanish music. We all had a fantastic time!



Get Caught Reading Competition

The Winners of the Get Caught Reading competition went to Waterstones to choose and buy their prize. It was so gorgeous to see the care and thought they took browsing and choosing one they thought they would love! We may have stopped for a cheeky ice cream on the way home...



Islington Attendance Mentors

We know that attending school every day can sometimes feel challenging. [The Islington Life article](#) beside this section explains how Islington Attendance Mentors work with families to understand difficulties and support routines that help children attend regularly. Nora, our Attendance Lead will be contacting parents/carers about this support, and will continue to connect families where it may help. Click the article for further [information](#).

At RF we also offer support in school:

- A new School Wellbeing Service (SWS) group is beginning soon.
- ELSA sessions are available to help children manage emotions.
- More individual or tailored support can be arranged if needed. Please speak with us.

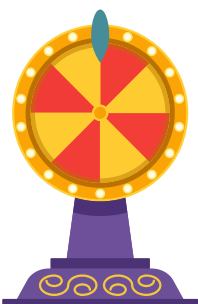
To help at home, try to keep morning routines steady and aim to book appointments outside school hours. Let us know early if something is making attendance difficult so we can work together. Please remember that term time leave is not authorised. Every day matters and every child deserves the chance to succeed.

Family matters: school attendance



Rose Bowl

Last week, all children who achieved 100% attendance were entered into a prize wheel. A group of winners was selected at random, and these children were treated to a special celebration trip to the Rose Bowl. Well done to all our super attenders!



Attendance Cinema Trip

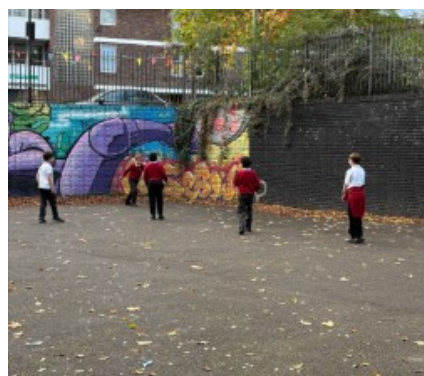
Upcoming Cinema Trip – Wednesday 26th November!

We are excited to announce that a special cinema trip is planned for Wednesday 26th November at Cineworld Wood Green. A group of pupils will be selected to take part as a reward for their improved attendance.

Be IN to WIN

Thank you to all the pupils who are showing excellent attendance; keep up the great work!

More details will follow closer to the date.



REMINDERS - DATES FOR YOUR DIARY

All important events can be found on the public calendar on the school website

EVENTS	DATES
Pine - Library Visit	Wednesday 19 th November
Ash - British Library Visit	Monday 1 st December
Year 5 Assembly	Wednesday 2 nd December @9:10
Cedar - British Library Visit	Friday 5 th December
RF Christmas lunch and Festive Jumper day	Friday 12 th December
Early Years Nativity	Tuesday 16 th December @9:15
Bedtime Books	Tuesday 16 th December @3:30
Year 2 Assembly	Wednesday 11 th February @9:10
Year 3 Assembly	Thursday 26 th March @9:10
Year 1 Assembly	Tuesday 5 th May @9:10
Year 6 Assembly	Date TBC

Educational Experiences in 2025-26

Year 1
 Freightliner's City Farm
 London Bus Tour
 Florence Nightingale Museum
 V&A Childhood Museum
 King Henry's Walk Garden

Year 2
 Tate Modern
 The Monument
 Horniman Museum
 London Zoo
 Hampstead Heath
 Museum of Docklands

Year 3
 British Museum
 Science Museum
 Pantomime
 Westminster Walk
 London Aquarium
 Kew Gardens
 Mosque Visit

Year 4
 Science Museum
 Chocolate Museum
 Church Visit
 Ragged School Museum
 River Lea
 Highgate Wood

Year 5
 Olympic Park
 Science Museum
 British Museum
 Synagogue Visit
 London Zoo
 Southbank

Year 6
 HMS Belfast
 Jewish Museum
 Ben Kinsella Workshop
 Theatre Trips
 National Portrait Gallery

A voluntary donation of £24 via Arbor helps fund all the educational visits we offer over the year.

Your generous donations help makes trips like these possible, and mean we can offer a range of fantastic learning opportunities!

For more details, or if you have any questions, please speak to us in the office!

SENCO OPEN DOOR

A chance to come and speak to Kimberley - will see parents on the order they arrive.

Dates

- Tuesday 4th November 9 - 10
- Tuesday 11th November 9-10
- Tuesday 18th November 9-10

Free School Meal Vouchers during school holidays

Do you qualify for free school meals (FSM) status. Anyone who hasn't applied or whose circumstances may have changed please apply on Islington's Citizen portal to see if you are eligible.
[Free school meals | Islington Council](#)

Late Collection Policy

The school applies a late collection charge for children who are not collected from school on time. The Late Collection Policy and charges can be accessed using the following link.
[Rotherfield Primary School - School Policies](#)

Support with Childcare

If you are a working parent and require help with Childcare please use the links to see what help is available.
[Eligibility checker | Best Start in Life](#)
[Tax-Free Childcare - GOV.UK](#)
[Free Childcare for Working Parents: Overview - GOV.UK](#)

Lettings / Hall Hire

Rotherfield has partnered with Sharesy to make booking our hall simple. Click below view our spaces, prices and availability: <https://www.sharesy.com/v/rotherfield-primary-school>
 Parents/Carers of pupils attending Rotherfield can email the school for information on available discounted rates.

Islington Healthy School Advisor

Please click here to see community food services available within Islington
[Community Food Services - Islington Food Partnership](#)

Clubs contact info

Should you need to reach a staff member after 4PM regarding your child at after-school club (such as late collection from after school club), please call this number for immediate assistance: 07955184099