



MESSAGE FROM THE HEADTEACHER

We are so happy to welcome all our Rotherfield families back to school as we begin a fresh new year together. The children have returned with such positivity and enthusiasm, and it has been wonderful to see classrooms full of energy and eager learners once again. Attendance has been very good this week, and we truly appreciate the commitment families make to ensuring children are in school, ready to learn.

Our spring term curriculum newsletters will be sent out to families next week. These will give you an overview of the learning planned in each year group, highlight key dates, and share ways you can support learning at home.

This month, our Right of the Month is UNCRC Article 12 – the right to be heard. We will be exploring this right in class and thinking carefully about how children can express their views respectfully and confidently. Across the school, we will also be continuing to strengthen pupil voice, ensuring that children have meaningful opportunities to share their ideas, influence decisions, and help shape life at Rotherfield. Children's voices are important, and we are committed to making sure they are listened to and valued.

We're looking forward to a fantastic term ahead at Rotherfield and are grateful for your continued support.

THIS WEEKS TOP NEWS - Beech Class - Vegetable Shop Adventure

This week, Beech Class visited a local shop to buy fresh vegetables as part of the book we are exploring in Literacy – The Enormous Turnip. The children were full of curiosity as they explored the display of carrots, peppers, and more. We talked about the vegetables we were familiar with, such as potatoes and onions, and even discovered some new ones we hadn't tried before, like butternut squash and yam.

We discussed different ways to pay in the shop – cash, card, and phone – and predicted how much we thought our vegetables would cost. Some guesses were as little as 13p, while others were as high as £300! Thankfully, they weren't as expensive as our biggest guesses. Then we bought some to take back to school. Back at school, we talked about the different vegetables we bought. The children loved sharing their favourites, and we thought we might need to ask Tiago and Dino in the kitchen how to cook the ones we're not familiar with!



SCHOOL ATTENDANCE

Whole school: **93%**

National: **95%**

Apple	100%
Ash	97%
Elm	97%
Cedar	96%
Palm	96%
Beech	96%
Mulberry	95%
Silver birch	94%
Rowan	93%
Maple	92%
Pine	92%
Olive	92%
Willow	90%
Oak	88%



STARS OF THE WEEK

Well done to all our wonderful children on their hard work this week. The following deserve a special mention for receiving **Star of the week!**

Year 6: Adar, Trina and Fadi

Year 5: Yusra and Scarlett

Year 4: Corey and Renan

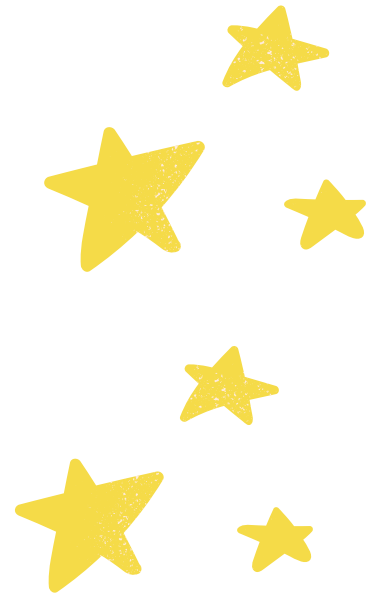
Year 3: Alya and Pandora

Year 2: Killian and Grey

Year 1: Harley

Reception: AJ

Nursery: Jibrail



ATTENDANCE CHAMPIONS

KS1: Teddy (Palm)

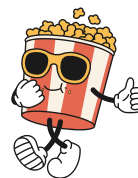


KS2: Malaya (Elm)

POPCORN PARTY

(as chosen by the pupil voice)

Well done to **Ash** class for having the highest attendance this week!



RESPECT CHAMPIONS

KS1: Zakai (Oak)

KS2: Max (Willow)



Top Rockstar for this week:

Ayaan (Rowan) for becoming a headliner!



Top Numbot for this week:

Hamirah.Y





workshop

HEALTHY PACKED LUNCHES

That Don't Break the Bank

Friday, January 16th
9:15am

Rotherfield Primary School



Term Time Leave Letter



Rotherfield Primary School

Rotherfield Primary School
Rotherfield Street, London, N11 3EE
Tel: 020 7226 6620
Email: admin@rotherfieldprimary.co.uk
www.rotherfieldprimaryschool.co.uk
Executive Headteacher: Paul Thomas
Head of School: Nia Silverwood

Dear Parent/Carer,

Re: Family Holidays and Special Leave in Term Time

I am writing to all families to remind you of Rotherfield School's policy about holidays or leave during term time.

The law requires parents/carers to ensure their child's regular attendance at school; therefore, we would not expect you to take your child out of school for a holiday.

When considering the timing, please remember the following:

- Rotherfield Primary School will not authorise any holidays during term time just like all other Islington schools.
- A one-week term time holiday will mean that your child misses out on 5 literacy lessons and 5 numeracy lessons.
- Research shows that children often do not catch up from work missed - this could have serious consequences for their learning and progress.
- There are 175 non-school days in each year for holidays, cultural experiences and family time.

If after these considerations, you feel it is absolutely unavoidable to take your child on a special leave of absence in term time: you must make an application in advance.

Applications for special leave in exceptional circumstances may be considered by the Headteacher. Forms are available from the school office, and we request you apply 4 weeks in advance. Please note - these will only be approved in exceptional circumstances.

If you withdraw your child during term time and we have not agreed to it, this absence will be unauthorised and could result in a penalty notice (a £80-£160 fine) or a summons to court. If you have received a Penalty Notice fine and your child continues to have unsatisfactory attendance, prosecution may be considered for the period not covered by the Penalty Notice.

Our aim is to ensure our pupils receive the most from their education and I hope we can count on your support in this matter.

Yours sincerely

Nora Achghaf

Attendance lead



We're teaching every child to read with Little Wandle Letters and Sounds Revised complete SSP endorsed by the Department for Education



ROTHERFIELD PRIMARY PRESENTS

PHONICS INFORMATION SESSION

EYFS and Year 1

21ST JANUARY 2026

9- 9 30 AM

SCAN QR CODE BELOW TO SIGN UP



STRATEGIES TO SUPPORT YOUR CHILD AT HOME

EXPERIENCE THE TEACHING OF PHONICS

HOW TO DEVELOP READING FOR PLEASURE.



Brownie with Ice Cream Day

Thursday - 15th January - To all Children



Come enjoy lovely Chicken Sausages with golden potatoes and all the trimmings!!
Dessert will be a delicious school made brownie, topped with vanilla ice cream and a creamy warm chocolate sauce!
You'll love it!!

Year 6 SATs Parents/Carers Meeting

Please come along to find out all the key information you need to know about the 2026 SATs, and how you can best support your child.

Friday 30th January at 3.40pm with the year 6 team in the Performance Hall.

Reminder - Dates for your Diary

All important events can be found on the public calendar on the school website

EVENTS	DATES
Year 1 - The Florence Nightingale Museum Trip	Wednesday 14 th January
Workshop: Healthy Packed Lunches that don't break the bank	Friday 16 th January
Year 2 - The Horniman Museum Trip	Tuesday 27 th January
Year 6 SATS Parents/Carers Meeting	Friday 30 th January @3:40pm
Parent/Carer reader drop-in	Wednesday 4 th February (9 - 9:20am)
Parent/Carer reader drop-in	Thursday 5 th February (9 - 9:20am)
Year 2 Assembly	Wednesday 11 th February @9:10
Year 3 Assembly	Thursday 26 th March @9:10
Year 1 Assembly	Tuesday 5 th May @9:10
Year 6 Assembly	Date TBC

Educational Experiences in 2025-26

Year 1
 Freightliner's City Farm
 London Bus Tour
 Florence Nightingale Museum
 V&A Childhood Museum
 King Henry's Walk Garden

Year 2
 Tale Modern
 Horniman Museum
 London Zoo
 Hampsstead Heath
 Museum of Docklands

Year 3
 British Museum
 Science Museum
 Fantomime
 Westminster Walk
 London Aquarium
 Kew Gardens
 Mosque Visit

Year 4
 Science Museum
 Chocolate Museum
 Church Visit
 Ragged School Museum
 River Lea
 Highgate Wood

Year 5
 Olympic Park
 Science Museum
 British Museum
 Synagogue Visit
 London Zoo
 Southbank

Year 6
 HMS Belfast
 Jewish Museum
 Ben Kinsetla Workshop
 Theatre Trips
 National Portrait Gallery

A voluntary donation of £24 via Arbor helps fund all the educational visits we offer over the year.
 Your generous donations help make trips like these possible, and mean we can offer a range of fantastic learning opportunities!
 For more details, or if you have any questions, please speak to us in the office!

SEND Friends at The Parent House
 for Islington parents of children with SEND

As parents of children with Special Educational Needs and Disability we are 'experts through experience' and we know how important it is to have a chance to meet up, share ideas, gain information and get support.

Come along to our group sessions – just drop in...everyone is welcome.

Date: Every Tuesday Morning
 starting 13th of January 2026
Time: 10am - 12 pm
Place: The Parent House, 55 Calshot Street, N1

For more information contact michele@theparenthouse.co.uk
 020 7837 1383

Registered Charity No. 1051440
www.theparenthouse.org

Islington Parent Carer Forum
Coffee Morning

GUEST SPEAKER
Gill Sassenie
 Principal Educational Psychologist
 for Islington Council

Friday 16th January
 9.30am - 11.30am
 At 61-71 Lough Road N7 8FF

Run by SEND families for SEND families
www.islingtonparentcarerforum.com

Free School Meal Vouchers during school holidays

Do you qualify for free school meals (FSM) status. Anyone who hasn't applied or whose circumstances may have changed please apply on Islington's Citizen portal to see if you are eligible.
[Free school meals | Islington Council](#)

Late Collection Policy

The school applies a late collection charge for children who are not collected from school on time. The Late Collection Policy and charges can be accessed using the following link.
[Rotherfield Primary School - School Policies](#)

Support with Childcare

If you are a working parent and require help with Childcare please use the links to see what help is available.
[Eligibility checker | Best Start in Life](#)
[Tax-Free Childcare - GOV.UK](#)
[Free Childcare for Working Parents: Overview - GOV.UK](#)

Lettings / Hall Hire

Rotherfield has partnered with Sharesy to make booking our hall simple. Click below view our spaces, prices and availability: <https://www.sharesy.com/v/rotherfield-primary-school>
 Parents/Carers of pupils attending Rotherfield can email the school for information on available discounted rates.

Islington Healthy School Advisor

Please click here to see community food services available within Islington
[Community Food Services - Islington Food Partnership](#)

Clubs contact info

Should you need to reach a staff member after 4PM regarding your child at after-school club (such as late collection from after school club), please call this number for immediate assistance: 07955184099