

MESSAGE FROM THE HEADTEACHER

Dear Parents and Carers,

This week we were delighted to welcome our Islington Professional Partner into school. Together, we focused on our provision for children with SEND, and I'm pleased to share some very positive feedback.

SEND Provision

Our adaptations for pupils with SEND were described as clear, purposeful, and genuinely impactful. The classroom environments across the school came through as a real strength, with universal provision in place that supports all children to learn well. This includes the effective use of maths manipulatives, working walls, and visual timetables, all of which help pupils to access learning with confidence.

Our support staff were also recognised for their skill, care, and professionalism. They play a vital role in ensuring every child feels supported and able to thrive, and I want to extend a big thank you to them for their continued hard work.

Community Concerns

We have unfortunately received complaints from neighbours regarding littering and dog fouling on Elizabeth Avenue. Please ensure that children are not dropping litter on their way to and from school. It's important that we all show respect and consideration for our local community.

Attendance

With just one week to go until the end of term, please help us maintain **strong attendance right to the finish line**. Every day counts, and we want all children to make the most of the learning and celebrations ahead.

THIS WEEKS TOP NEWS - National Portrait Gallery

Olive Class enjoyed a fantastic visit to the National Portrait Gallery, where they explored the Tudor portrait collection. The children learned about different styles of portraits and how artists used colour, clothing and symbols to tell a story about the people in the portraits. They then looked closely at paintings to spot clues showing that the subjects were wealthy, powerful, royal and interested in the wider world. The visit was enjoyed by all, supported our history learning about the Tudors. It helped deepen the children's understanding by studying real historical sources up close!



SCHOOL ATTENDANCE

Whole school: **93.5%**
National: **95%**

Apple	100%
Olive	98%
Cedar	96%
Oak	95%
Rowan	94%
Ash	93%
Silver birch	93%
Beech	93%
Pine	92%
Maple	92%
Mulberry	91%
Willow	91%
Palm	90%
Elm	86%



STARS OF THE WEEK

Well done to all our wonderful children on their hard work this week. The following deserve a special mention for receiving **Star of the week!**

Year 6: Valentino, Rosa, Aleyna

Year 5: Nathaniel and Amiir

Year 4: George and Brooklyn

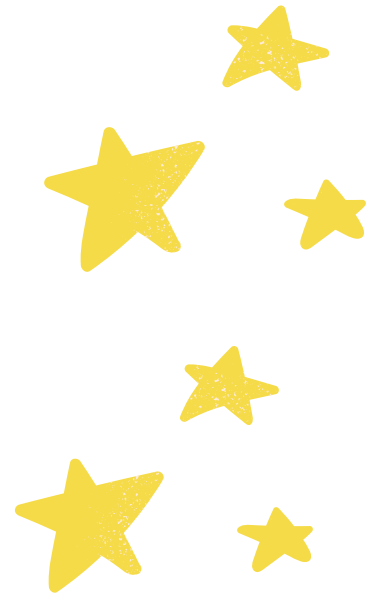
Year 3: Bintou and Mia

Year 2: Yousef and Deon

Year 1: Sana

Reception: Inas

Nursery: Archie



ATTENDANCE CHAMPIONS

KS1: Amya (Silver birch)

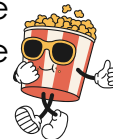


KS2: Hamza (Rowan)

POPCORN PARTY

(as chosen by the pupil voice)

Well done to **Olive** class for having the highest attendance this week!



RESPECT CHAMPIONS

KS1: Lias (Maple)

KS2: Renae (Rowan)



Top Rockstar for this week:

Attau (Mulberry) - most minutes played



Top Numbot for this week:

Ayoub (Silver Birch) - High Engagement



Safer Internet Day - 10th February 2026

We will be celebrating Safer Internet Day this year by delving into Artificial Intelligence (AI). Later in the term we are happy to have 3Discovery join us to run an assembly and workshops to celebrate Safer Internet Day.

<https://saferinternet.org.uk/safer-internet-day/safer-internet-day-2026>



Do your children talk about Discord? Discord is a website where children can speak to strangers about a wide range of topics, but it's not designed for children. Adults use the platform to discuss games, politics and controversial topics that are not suitable for children at primary school. Apple has classified it with an age rating of 17+ years old. [Here](#) is a guide so you can find out more about Discord.



World Book Day 2026

This year World Book Day is being held at RF on Thursday the 5th of March.

We would love children to come to school in costume – this can be linked to their favourite book or character from a book.

You do not need to buy a costume: home made ones are wonderful. Ideas can be found here: [Dressing Up Resources - World Book Day](#)

There will be a prize for the best costume in each year group!



Rotherfield Primary School
Rotherfield Street, London, N1 3EE
Tel: 020 7226 4420
Email: office@rotherfieldprimary.co.uk
www: rotherfieldprimaryschool.co.uk
Executive Headteacher: Paul Thomas
Head of School: Nia Silverwood

Rotherfield Primary School
Growing Futures

15th January 2026

Dear Parents and Carers,

We'd love to invite you to a **fun, hands-on times tables session** with your child and a chance to find out key information about the upcoming Multiplication Tables Check (MTC) which will take place in June.

When: Thursday 12 February 2026 at 2:45pm
Where: In your child's classroom

During the session, you will:

- Join your child for quick, engaging times tables games and activities.
- Pick up simple strategies for practising at home.
- Hear key information about the **MTC** (the statutory Year 4 multiplication tables check) and how we'll support children in school.

Please let us know if you can attend by Friday 7th February by returning the slip below.

If you're unable to make it, we will share the resources and tips afterwards, so you don't miss out.

Thank you for your continued support - we look forward to seeing you!

Best wishes,
Emily Meadows
Assistant Headteacher (Maths Lead / Head of Year 3 and 4)

Child's name: _____ Class: _____
Parent/carer name(s): _____

I/we will attend
 I/we cannot attend but would like the resources

Please return to the class teacher or the school office by **Monday 9th February**.

Year 4 - Trip to Ragged School

Year 4 were lucky to visit the Ragged School to learn all about Victorian School life and Dr Barnardo who opened it. They got to experience a real Victorian classroom and different lessons from a scary Victorian teacher, Miss Perkins!



Reminder - Dates for your Diary

All important events can be found on the public calendar on the school website

EVENTS	DATES
Year 2 Assembly	Wednesday 11 th February @9:10
Year 4 - Maths game Parent/Carer drop in	Wednesday 12 th February @2:45
Last day of term	Friday 13 th February
INSET DAY	Monday 23 rd February
Children return to school	Tuesday 24 th March
Class Photos	Tuesday 3 rd March
World Book Day 2026	Thursday 5 th March
Eid Class Assembly	Wednesday 25 th March @9:15
Easter Class Assembly	Thursday 26 th March @9:10
Year 1 Assembly	Tuesday 5 th May @9:10
Year 6 Assembly	Date TBC
KS2 SATs Week	Monday 11 th May - Friday 15 th May

Educational Experiences in 2025-26

Year 1
 Freightliner's City Farm
 London Bus Tour
 Florence Nightingale Museum
 V&A Childhood Museum
 King Henry's Walk Garden

Year 2
 Tate Modern
 The Monument
 Roman Museum
 London Zoo
 Hampstead Heath
 Museum of Docklands

Year 3
 British Museum
 Science Museum
 Pantomime
 Westminster Walk
 London Aquarium
 Kew Gardens
 Mosque Visit

Year 4
 Science Museum
 Chocolate Museum
 Church Visit
 Ragged School Museum
 River Lea
 Highgate Wood

Year 5
 Olympic Park
 Science Museum
 British Museum
 Synagogue Visit
 London Zoo
 Southbank

Year 6
 HMS Belfast
 Jewish Museum
 Ben Kinsella Workshop
 Theatre Trips
 National Portrait Gallery

A voluntary donation of £24 via Arbor helps fund all the educational visits we offer over the year.

Your generous donations help makes trips like these possible, and mean we can offer a range of fantastic learning opportunities!

For more details, or if you have any questions, please speak to us in the office!

Click Here

Islington Competition

Name our new all electric street sweepers

Get creative and make an impact

We're inviting primary school students to take part in an exciting competition to name our brand-new all electric street sweepers. This is your chance to make a lasting impact on our community and help make Islington a more environmentally friendly and healthier borough for everyone.

How to get involved

We're calling on all primary schools to participate in this creative challenge! We're encouraging students to think big and come up with a name that will inspire our community.

Prize for the best entry

- the winning name will be proudly displayed on our new vehicles, showcasing the school's contribution to our more environmentally friendly and healthier future
- the winning school will also receive a micro-scooter to encourage healthy and sustainable travel
- the winning student will receive a bag of goodies from our partners at Bucher Municipal.

How to enter

Schools and students can submit their name suggestions using our form. Each school can submit multiple entries, so encourage your students to get creative!

Judging criteria

The name should be fun, catchy, and reflect our efforts to promote environmentally friendly travel, tackling the climate crisis and electrifying our fleet. A panel of active travel and climate experts will shortlist the entries and the winning name will be chosen by the public.

Don't miss out on this exciting opportunity to inspire change and make a difference.

Free School Meal Vouchers during school holidays

Do you qualify for free school meals (FSM) status. Anyone who hasn't applied or whose circumstances may have changed please apply on Islington's Citizen portal to see if you are eligible.
[Free school meals | Islington Council](#)

Late Collection Policy

The school applies a late collection charge for children who are not collected from school on time. The Late Collection Policy and charges can be accessed using the following link.
[Rotherfield Primary School - School Policies](#)

Support with Childcare

If you are a working parent and require help with Childcare please use the links to see what help is available.
[Eligibility checker | Best Start in Life](#)
[Tax-Free Childcare - GOV.UK](#)
[Free Childcare for Working Parents: Overview - GOV.UK](#)

Lettings / Hall Hire

Rotherfield has partnered with Sharesy to make booking our hall simple. Click below view our spaces, prices and availability: <https://www.sharesy.com/v/rotherfield-primary-school>
 Parents/Carers of pupils attending Rotherfield can email the school for information on available discounted rates.

Islington Healthy School Advisor

Please click here to see community food services available within Islington
[Community Food Services - Islington Food Partnership](#)

Clubs contact info

Should you need to reach a staff member after 4PM regarding your child at after-school club (such as late collection from after school club), please call this number for immediate assistance: 07955184099