



## MESSAGE FROM THE HEADTEACHER

Dear Parents and Carers,

What a wonderful week we have had in school! Our World Book Day celebrations brought such a buzz of excitement, creativity and imagination to every classroom. This year, our whole-school theme focused on alternative fairy tales, and the children absolutely threw themselves into exploring stories with surprising twists, unexpected heroes and playful re-tellings.

A huge thank you to all families for supporting the day with such fantastic costumes. From reimagined princesses and bold adventurers to magical creatures and clever villains, the range and originality on display were incredible. The children also took part in thoughtful discussions about their favourite books and it was a joy to see their enthusiasm.

At Rotherfield, we believe that positive communication must remain at the heart of everything we do. Our staff are always here to help, and we continue to operate an open-door policy so that families feel confident approaching us with questions or concerns. We are currently working on clarifying our procedures to make it even easier for parents and carers to know how and when to contact us. As you may be aware, the government is producing new guidance around AI-generated complaints, which are sadly becoming an issue in schools nationally. As always, it is far better — and far more productive — to talk to us directly and share any worries early, before anything escalates unnecessarily. This allows us to focus our time and energy where it matters most: working hard every day to improve educational outcomes for our children.

### Right of the Month Article 30: The Right to Practise Your Own Religion

This month we are learning about Article 30 of the UN Convention on the Rights of the Child, which says that every child has the right to enjoy their own language, beliefs and way of life. Children should be able to speak the language their family uses at home, celebrate important traditions and festivals and learn about the customs and beliefs that are important to their family.

Many of our pupils and families will also be observing Ramadan this month. Some children may be fasting or taking part in special family traditions during this time. At school we respect and support pupils who are observing Ramadan and recognise the importance of these traditions as part of children's beliefs and identity.

Article 30 reminds us that every child's culture, language and beliefs should be respected and valued, while also ensuring that all children are safe and protected. We look forward to continuing to celebrate the diversity that makes our school community so special.



## SCHOOL ATTENDANCE

Whole school: **93.4%**  
National: **95%**

Apple	100%
Rowan	99%
Pine	98.5%
Maple	98%
Beech	97%
Olive	97%
Palm	94%
Mulberry	94%
Oak	91%
Cedar	90%
Silver birch	90%
Elm	89%
Willow	86%
Ash	84%

### Spelling Shed Groups

#	Group	Score
1.	Ash	11,659,192
2.	Mulberry	2,878,148
3.	Olive	1,674,787



## STARS OF THE WEEK

Well done to all our wonderful children on their hard work this week. The following deserve a special mention for receiving **Star of the week!**

**Year 6: Tillie, Kidus and Millie Mae G**

**Year 5: Sakibur and Abigail**

**Year 4: Elijah, Alfie and Rami**

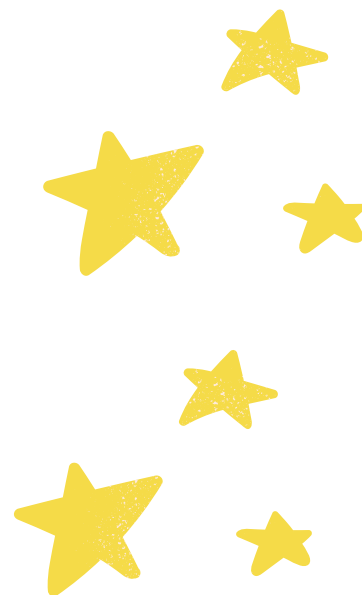
**Year 3: Safia and Izrael**

**Year 2: Mikey and Amber**

**Year 1: Milo**

**Reception: Naira**

**Nursery: Amira**



### ATTENDANCE CHAMPIONS

**KS1: Asenka** (Pine)



**KS2: Corey** (Rowan)

### POPCORN PARTY

(as chosen by the pupil voice)

Well done to **Rowan** class for having the highest attendance this week!



### RESPECT CHAMPIONS

**KS1: Willow**  
(Palm)

**KS2: Candice**  
(Olive)



**Top Rockstar for this week:**

Cedar – highest accuracy

TTRS - Mason N – highest improvement in accuracy



**Top Numbot for this week:**

Reyan S – most iron collected

# Boys Football



The boys football team are back! The Year 5's played a great debut match yesterday and although we lost it was a fantastic performance - with Bobby even saving a penalty! Well done boys!



## Mastering Numbers at home workshop

Last Friday, our Year 1 families took part in a "Mastering Number at Home" workshop. Parents joined us to learn how we teach early number sense in school, including subitising and finding different ways to make numbers like 6 and 7. Children then joined their grown-ups for practical activities using egg boxes, counters and dice frames to explore number bonds in fun, hands-on ways. Each family left with simple games they can play at home for just a few minutes a day, helping children build confidence with early maths through quick, playful practice.



### Photo exhibition: Our Lives, Our Culture, Our London .

**A reminder that the deadline to get your photos in is the 23<sup>rd</sup> of March.**

**Send in a photo taken by your child of anything they like to be part of our RF photo exhibition.**

**Email photos to [admin@rotherfieldprimary.co.uk](mailto:admin@rotherfieldprimary.co.uk)**

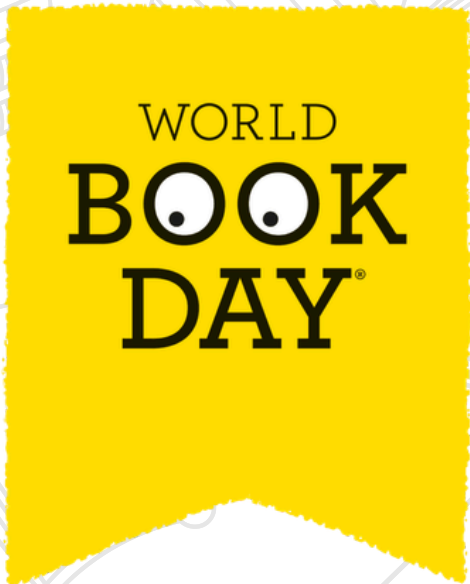
### Top 10 Spelling Shed Winners

	Botesse, Emmanuella	Ash	3,225,424
	Kharroubi, Rima	Mulberry	2,878,148
	Cosar, Berkay	Ash	2,491,232
	Al Hussein, Nour	Ash	1,687,326
	Richards, Moriah	Cedar	985,427
	Sudemir, Lara	Ash	913,934
	Moore, Rosa-Lee	Ash	836,562
	Bola, Candice	Olive	781,198
	Law, Arthur	Palm, Palm	731,120
	Hamizi, Rumaysa	Ash	530,406

# World Book Day 2026!

This week was World Book Day at Rotherfield – and globally!

The costumes were incredible and children were so enthused about their favourite books and characters. 2026 is the Year of Reading in the UK so we really want to develop the love our children have for reading and help them seek out books that they want to read. Please chat with your child's class teacher or Rosa (the reading lead) for tips for reading at home, recommendations for books and ideas to support your child develop a love of reading. We have the book fair in school every afternoon of the week of the 16th of March and children can spend their WBD vouchers here!

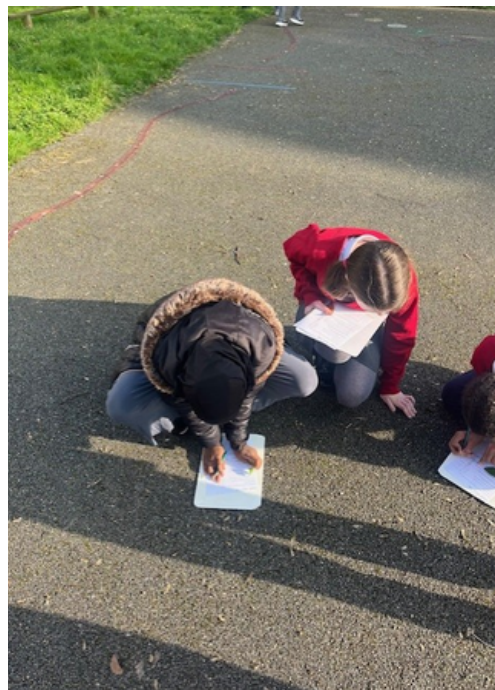


# World Book Day Costume Winners!

Class	Winner	Who were they:
N: Apple	Reid	Oompa Loompa
R: Beech	Reuben and Nova	Simba (Lion king) / Lavender (Matilda)
1: Oak	Aaliyah	Handa from Handa's Surprise
2: Pine	Jeremiah	Horrid Henry
2: Maple	Leyla	Oompa Loompa
3: Silver Birch	Amya	Where's Wally
3: Palm	Amelia	Wenda from Where's Wally
4: Willow	Nina	Fairy princess
4: Rowan	Alfie	Oompa Loompa
5: Elm	Liyana	Simon the Chipmunk
5: Mulberry	Amiir	Harry Potter
6: Ash	Lily	Demon Slayer
6: Olive	Oliver	Hiccup from How to Train your Dragon
6: Cedar	Tillie	Dalmatian

## Year 6 - Green Space Visit

Year 6 visited the Green Space on Wednesday to collect a range of leaf samples for our current science topic. Using key scientific questions, the children carefully analysed each sample before working collaboratively to classify them. They applied scientific enquiry skills throughout the session and created their own classification keys to organise their findings.



# Reminder - Dates for your Diary

All important events can be found on the public calendar on the school website

EVENTS	DATES
Eid Class Assembly	Wednesday 25 <sup>th</sup> March @9:15
Easter Class Assembly	Thursday 26 <sup>th</sup> March @9:10
Last day of school	Friday 27 <sup>th</sup> March
Easter Holidays	Monday 30 <sup>th</sup> March - Friday 10 <sup>th</sup> April
First day back at school	Monday 13 <sup>th</sup> April
Year 1 Assembly	Tuesday 5 <sup>th</sup> May @9:10
Year 6 Assembly	Date TBC
KS2 SATs Week	Monday 11 <sup>th</sup> May - Friday 15 <sup>th</sup> May

## Thank You for Joining Us

A warm thank you to all the families who attended our recent support session delivered by a representative from Actually Autistic. We were grateful to be able to offer this opportunity, and we truly appreciate the time you took to join us.

The session explored the experiences of children who 'mask' during the school day, as well as life after receiving a diagnosis. Your engagement and reflections made the discussion especially meaningful.

Thank you once again for your continued support and for being part of such an important conversation. - Nora

actually-  
autistic  
.co.uk

**Educational Experiences in 2025-26**

- Year 1:** Freightliner's City Farm, London Bus Tour, Florence Nightingale Museum, V&A Childhood Museum, King Henry's Walk Garden
- Year 2:** Tale Modern, The Monument, Horniman Museum, London Zoo, Hampstead Heath, Museum of Docklands
- Year 3:** British Museum, Science Museum, Fantomime, Westminster Walk, London Aquarium, Kew Gardens, Mosque Visit
- Year 4:** Science Museum, Chocolate Museum, Church Visit, Ragged School Museum, River Lea, Highgate Wood
- Year 5:** Olympic Park, Science Museum, British Museum, Synagogue Visit, London Zoo, Southbank
- Year 6:** HMS Belfast, Jewish Museum, Ben Kinsella Workshop, Theatre Trips, National Portrait Gallery

A voluntary donation of £24 via Arbor helps fund all the educational visits we offer over the year.

Your generous donations help makes trips like these possible, and mean we can offer a range of fantastic learning opportunities!

For more details, or if you have any questions, please speak to us in the office!

### Free School Meal Vouchers during school holidays

Do you qualify for free school meals (FSM) status. Anyone who hasn't applied or whose circumstances may have changed please apply on Islington's Citizen portal to see if you are eligible.  
[Free school meals | Islington Council](#)

### Late Collection Policy

The school applies a late collection charge for children who are not collected from school on time. The Late Collection Policy and charges can be accessed using the following link.  
[Rotherfield Primary School - School Policies](#)

### Support with Childcare

If you are a working parent and require help with Childcare please use the links to see what help is available.  
[Eligibility checker | Best Start in Life](#)  
[Tax-Free Childcare - GOV.UK](#)  
[Free Childcare for Working Parents: Overview - GOV.UK](#)

### Lettings / Hall Hire

Rotherfield has partnered with Sharesy to make booking our hall simple. Click below view our spaces, prices and availability: <https://www.sharesy.com/v/rotherfield-primary-school>  
Parents/Carers of pupils attending Rotherfield can email the school for information on available discounted rates.

### Islington Healthy School Advisor

Please click here to see community food services available within Islington  
[Community Food Services - Islington Food Partnership](#)

### Clubs contact info

Should you need to reach a staff member after 4PM regarding your child at after-school club (such as late collection from after school club), please call this number for immediate assistance: 07955184099