



MESSAGE FROM THE HEADTEACHER

Dear Parents and Carers,

This week has been a particularly focused one in school as children in Years 1–5 have taken part in our assessment week. It has been wonderful to see how hard they have worked and how confidently they have approached each task. We are already beginning to look through the outcomes, and it is encouraging to see the progress pupils are making across the curriculum. We look forward to sharing these updates with you during Parents' Evening.

Across the school, we have also been reviewing our science curriculum. It has been exciting to see the development of hands-on, practical investigations in classrooms. Pupils are becoming increasingly confident in explaining their scientific thinking, asking thoughtful questions, and engaging in real enquiry-based learning. This is an area we will continue to strengthen as we move forward.

As we move into the final two weeks of term, I want to highlight the importance of good attendance. We have noticed a recent dip, with some families taking the occasional day here and there. Every day in school truly matters, especially at this point in the year, and we appreciate your support in ensuring children are in class and ready to learn.

Thank you, as always, for your continued support.

THIS WEEKS TOP NEWS - Year 2 - Football Fun!

Some children from Year 2 took part in a friendly football tournament at Market Road football pitches. They played three matches against other local schools and showed great energy, teamwork and resilience. Well done to Mikey, Ollie, Kallie, Ka'lia, Lias, Isa, Maia, Huxley, Aaliyah, Anayah and Henrique.



SCHOOL ATTENDANCE



STARS OF THE WEEK

Whole school: 93.4%
National: 95%

Apple	100%
Olive	99%
Rowan	97%
Pine	97%
Beech	96%
Silver birch	95%
Willow	94%
Palm	93%
Maple	92%
Mulberry	92%
Elm	91%
Oak	91%
Cedar	87%
Ash	85%

Well done to all our wonderful children on their hard work this week. The following deserve a special mention for receiving **Star of the week!**

Year 6: Elisa, Mason and Ariadna

Year 5: Ishon and Najae

Year 4: Areesha and Ruzgar

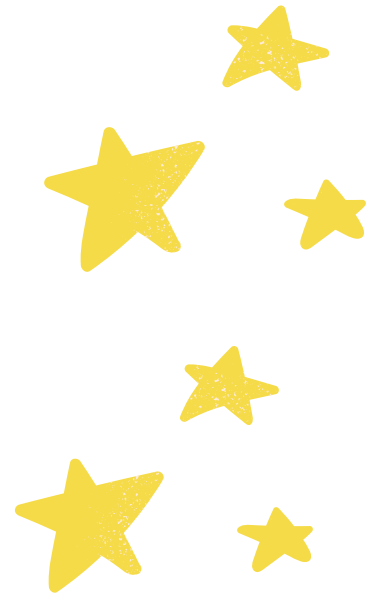
Year 3: Desteny and Berzan

Year 2: Grey and Huxley

Year 1: Abbas

Reception: Sadie

Nursery: Chloe



ATTENDANCE CHAMPIONS

KS1: Asenka (Pine)



KS2: Tatum (Willow)

POPCORN PARTY

(as chosen by the pupil voice)

Well done to **Olive** class for having the highest attendance this week!



RESPECT CHAMPIONS

KS1: Manasse (Silver Birch)



KS2: Moriah (Cedar)



Top Rockstar for this week:

Mohamed Hassan

Mulberry - highest accuracy



Top Numbot for this week:

Yousef A - Biggest increase in coins

Spelling Shed Groups

#	Group	Score
1.	Ash	8,349,053
2.	Willow	7,781,416
3.	Palm	3,704,554

Safer Internet Day at Rotherfield 3Discovery Workshops

As part of our Safer Internet Day celebrations, we will be visited by 3Discovery. They will visit on Friday 13th March. Children will be learning about Artificial Intelligence and online Safety. We will have an assembly in the morning and each year group (1-6) will do interactive workshops to explore the topic in more detail. 3 Discovery always make it fun, so we are looking forward to the visit.

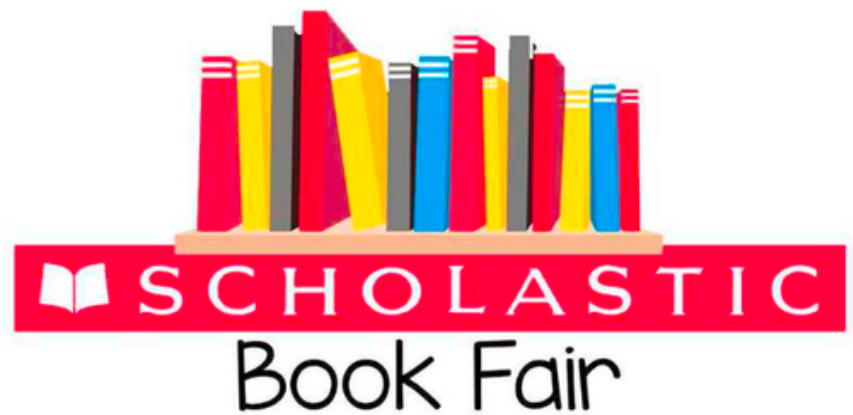
The most important thing we will learn is that we cannot trust everything we see online. We do not let children use AI apps at school and the advice is that they should not use them at home, AI is not safe for primary school children to use.

For parents who would like more information about AI, please click this link:
[Get advice for using artificial intelligence safely | Internet Matters](#)



Book Fair

Next week the Scholastic Book Fair will be in school, every afternoon on the playground from 3.30-3.45pm, Monday to Friday. Payment by QR code only so please bring your phone and your bank card!



Year 6 - SATS Support

RF Year 6 Pupils are eligible for this free two day programme over the holidays run by Into University. Please sign up if you can – it is a wonderful, free opportunity.

Holiday SATs Support
with IntoUniversity

When:

- Day 1 : Monday 31st March OR Tuesday 1st April
- Day 2: 2nd April

What:

- Day 1: SATS support, revision, and exam practice.
- Day 2: Welfare day full of fun and relaxing activities!

PLEASE NOTE: Students can only attend Day 2 if they have attended Day 1 on either the 31st of March or the 1st of April.

Who: Open to Year 6 students who meet IntoUniversity criteria or have worked with us before.

How: Register your interest by calling the Hackney South IntoUniversity centre on **020 7812 9588** or scanning this **QR CODE**

Where:
IntoUniversity Hackney South,
All Saints Centre,
Livermere Rd,
E8 4HT

Drama & Speaking Club

Please be aware that the timing has now changed to 3:30 - 4:30 for the Drama & Speaking Club. Please click [here](#) to book your child in.

www.thedramacentre.co.uk

NEW DRAMA AND PUBLIC SPEAKING CLUB

THE DRAMA CENTRE
Public Speaking and Acting

ROTHERFIELD PRIMARY
THURSDAYS 3:30-4:30PM

Reminder - Dates for your Diary

All important events can be found on the public calendar on the school website

EVENTS	DATES
Eid Class Assembly	Wednesday 25 th March @9:15
Year 2 Trip - London Zoo	Wednesday 25 th March
Easter Class Assembly	Thursday 26 th March @9:10
Last day of school	Friday 27 th March
Easter Holidays	Monday 30 th March - Friday 10 th April
First day back at school	Monday 13 th April
Year 1 Assembly	Tuesday 5 th May @9:10
Year 6 Assembly	Date TBC
KS2 SATs Week	Monday 11 th May - Friday 15 th May

Educational Experiences in 2025-26

Year 1
 Freightliner's City Farm
 London Bus Tour
 Florence Nightingale Museum
 V&A Childhood Museum
 King Henry's Walk Garden

Year 2
 Tate Modern
 The Monument
 Horniman Museum
 London Zoo
 Hampstead Heath
 Museum of Docklands

Year 3
 British Museum
 Science Museum
 Pantomime
 Westminster Walk
 London Aquarium
 Kew Gardens
 Mosque Visit

Year 4
 Science Museum
 Chocolate Museum
 Church Visit
 Ragged School Museum
 River Lea
 Highgate Wood

Year 5
 Olympic Park
 Science Museum
 British Museum
 Synagogue Visit
 London Zoo
 Southbank

Year 6
 HMS Belfast
 Jewish Museum
 Ben Kinsella Workshop
 Theatre Trips
 National Portrait Gallery

A voluntary donation of £24 via Arbor helps fund all the educational visits we offer over the year

Your generous donations help makes trips like these possible, and mean we can offer a range of fantastic learning opportunities!

For more details, or if you have any questions, please speak to us in the office!

Top Spelling Shed Students

#	Avatar	Student	Groups	Score	Total Score
1.		Cosar, Berkay	Ash	7,591,381	15,113,445
2.		Copurkuyu, Azra	Rowan	2,171,040	3,008,667
3.		Biassonama, Manass	Silver birch	1,729,569	2,205,817
4.		Law, Arthur	Palm, Palm	1,722,864	12,671,246
5.		Celik, Renan	Willow	1,415,818	1,926,262
6.		Riah, Eline	Willow	827,830	1,092,356
7.		Coleman-Harvey, Tatum	Willow	725,192	925,584
8.		Harvey, Alfred	Willow	702,608	1,043,264
9.		Harvey, Danny Joshua	Willow	686,460	686,460
10.		Sudemir, Lara	Ash	677,928	1,534,581

Free School Meal Vouchers during school holidays

Do you qualify for free school meals (FSM) status. Anyone who hasn't applied or whose circumstances may have changed please apply on Islington's Citizen portal to see if you are eligible.
[Free school meals | Islington Council](#)

Late Collection Policy

The school applies a late collection charge for children who are not collected from school on time. The Late Collection Policy and charges can be accessed using the following link.
[Rotherfield Primary School - School Policies](#)

Support with Childcare

If you are a working parent and require help with Childcare please use the links to see what help is available.
[Eligibility checker | Best Start in Life](#)
[Tax-Free Childcare - GOV.UK](#)
[Free Childcare for Working Parents: Overview - GOV.UK](#)

Lettings / Hall Hire

Rotherfield has partnered with Sharesy to make booking our hall simple. Click below view our spaces, prices and availability: <https://www.sharesy.com/v/rotherfield-primary-school>
 Parents/Carers of pupils attending Rotherfield can email the school for information on available discounted rates.

Islington Healthy School Advisor

Please click here to see community food services available within Islington
[Community Food Services - Islington Food Partnership](#)

Clubs contact info

Should you need to reach a staff member after 4PM regarding your child at after-school club (such as late collection from after school club), please call this number for immediate assistance: 07955184099